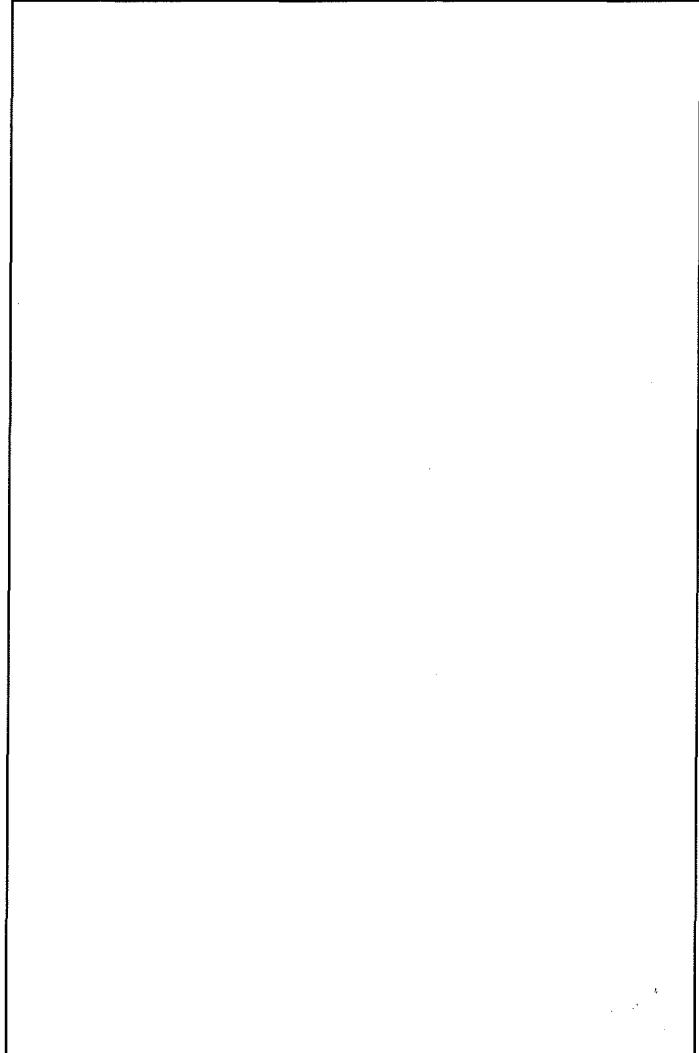


---

# **LUANDA URBAN FOOD BANK**

**PROJECT REPORT FY1993/94**



**For:**

- **Canadian Baptist Relief & Development  
Committee**

**By:**

- **Development Workshop  
Luanda, Angola**
-

Cover photo: Community health activists of the Sambizanga Community Development project give health and hygiene lectures while patients await their turn at the Ngola Kiluange Health Centre.

Photo credits: Copyright © Allan Cain, Development Workshop

## **Development Workshop**

**Angola Office:**  
**C.P. 3360**  
**Luanda, Angola**

**Canada Office:**  
**P.O. Box 1834**  
**Guelph, Ontario Canada N1H 7A1**

**PROJECT TITLE: LUANDA URBAN FOOD BANK**

**PROJECT REFERENCE: ANG-512**

**SECTOR: Human Settlements - Urban Community Development**

**COUNTRY: Angola**

**CANADIAN PARTNERS:** Canadian Baptist Relief & Development  
Committee (CBRDC)  
Canadian Food Grains Bank (CFGB)  
World Food Programme (WFP)

**LOCAL PARTNERS:** Angolan NGOs, Churches & Community  
Organizations

**IMPLEMENTING PARTNER:** Development Workshop (DW)  
C.P. 3360 Luanda, Angola

**CONTACT PERSON:** Allan Cain (Director)

# 1. INTRODUCTION

## 1.1 Background

The Luanda Urban Food Bank provides supplementary food rations to workers of NGOs in Angola involved in small-scale development projects in the Luanda region. The Urban Foodbank Programme is an extension of an earlier project supported through Programme Angola (the Canadian NGO consortia programme for Angola). When Programme Angola ceased operations, a renewed project was developed for direct funding by the Canadian Baptist Relief and Development Committee (CBRDC) and implementation by the Development Workshop.

## 1.2 Rationale

The project was designed as a response to Angola's severely distorted dual economy and its detrimental impact on the urban family economy. Angola has recently undergone major economic and political restructuring — adopting not only a free market economic strategy but also democratic pluralism. At the same time, Angola suffers the trauma of a return to war. From November 1992 through to the present, Angola has seen destruction and loss of life on a scale not previously experienced in the 16-year civil war. The war has, for the first time, come to the cities resulting in displacement of large populations. The government's capacity to meet the urgent needs of the war-displaced as well as the population's demands for social services has been considerably weakened.

The same period has seen the unprecedented growth in organizations of "civil society" such as local non-governmental organizations (NGOs), community based organizations (CBOs) and church based groups. The civil society has attempted, in a way never seen before, to meet the social needs of the population and assist marginalized groups. Concepts such as "popular participation" and "voluntarism" have taken on new meaning in Angolan society.

## **2. OBJECTIVES**

The Luanda Urban Food Bank aims to provide supplementary food rations as a support to workers of Angolan NGOs involved in small-scale development projects in the Luanda region. The project is designed to support NGO development projects by directly providing an incentive (food rations) to project workers, whose normal salaries often provide only a small proportion of their family's normal monthly needs. Without supplementary assistance project workers are forced to spend much of their time in search of food or in parallel income producing activities, taking time and energy away from their project responsibilities thus affecting project implementation.

Indirectly, the project aims to assist organizations of the emerging civil society, both religious and secular, in their efforts to address the needs of the poor and marginalized sectors of the population. During the reporting period the civil society is again under pressure after the break down of civil order following the 1994 elections.

## **3. BENEFICIARIES**

The project's beneficiaries can be divided into direct and indirect beneficiaries. The direct beneficiaries are the NGO development project worker who receive food subsidies through the Programme. The indirect beneficiaries are the target group(s) or the sector(s) of the urban poor who benefit from the projects supported by the Urban Food Bank Programme.

## **3. PROGRAMME STRATEGY**

The Urban Foodbank Programme provides supplementary food rations to workers in a variety of existing NGO and national church development projects in the peri-urban Musseques and periphery of Luanda. It was conceived as a support service to assist other projects in peri-urban and city periphery neighbourhoods to function more efficiently and effectively by facilitating national human resource inputs within these other projects. By providing workers access to supplementary food their own and their families' nutrition is improved. Workers' productivity is increased by reducing absenteeism and time taken off to procure other sources of food or to earn parallel income.

Each of the projects proposed to be supported by the Foodbank programme were operational **before** the programme began; there are no cases of projects "created" to take advantage of the Foodbank. Because the projects supported by the programme have an independent resource base, the food inputs provided by the Foodbank are supplemental rather than essential to the execution of the project. Care is taken to ensure that projects supported are viable in their own right and that food inputs do not create a dependency. Other inputs such as tools, capital equipment and human resources are all provided by the local partners or from other sources.

The Urban Foodbank programme has identified a number of development projects to channel food distribution to project participants. These projects fall in the general category of upgrading urban services and social infrastructure. Priority sectors identified by the project are: community health, water, sanitation, and training. Projects in these sectors have a substantial impact on women. Priority is given to projects assisting communities living in urban *musseques* or displaced populations often settled in the green belt around the urban area. Food is usually provided in addition to other project inputs such as tools, equipment and training.

The NGO project holders are defined as "local project partners". Local partners are the managers and implementors of their own programmes. The focus of the project and the strategy adopted for execution of the programme have not changed during the 1993-94 Fiscal Year. The principal change during this period has been the expansion in the number of partners and beneficiaries.

## **4. PROGRAMME DESCRIPTION**

### **4.1 Commodity Shipments**

Amidst fighting in the city at that time, the renewed project started in May 1993 with the continued distribution of food commodities remaining from the previous programme. An earlier commodity shipment was diverted to South Africa because of deteriorating security conditions in Luanda. When supplies ran out, Development Workshop borrowed from the World Food Programme as a bridging measure. CBRDC and CFGB planned another shipment to replace the diverted commodities, this eventually arrived in October 1993.

Due to continuing security concerns in Luanda and the general lack of control and high theft rates in the port of Luanda, Development Workshop negotiated with the World Food Programme to manage the reception of the 1993 commodities shipment and its transport to the Urban Food Bank warehouse. WFP agreed to clear Food Bank commodities at cost, but were unable to provide a quotation before the operation was undertaken. When later WFP presented invoices totalling USD 18,792 of which USD 1,800 was for transporting the 12 containers to the project warehouse. Development Workshop paid the invoice for transport but disputed the balance of the invoice with WFP on the basis that costs appeared to be significantly more than those of commercial agents. The matter has still not been resolved at the time of writing this report.

DW requested the next shipment to be planned for June 1994.

#### **4.2 Programme Expansion**

The number of requests from national churches and NGOs for affiliation with the Urban Food Bank Project continued to grow from late 1992 through to the present. For a period of several months after the "confrontations" in Luanda (October-November 1992) Development Workshop was one of the few international agencies still functioning in Angola and many local NGO partners looked to it for support. The continuing deterioration of the domestic economy has resulted in increasingly larger percentages of the population falling below the "absolute" poverty line. The massive migration into Luanda of those fleeing the war in neighbouring provinces is the single most important factor in the expansion of the programme.

Many national NGOs were founded in the two short years before the first Angolan elections in the fall of 1992. This "civic movement" risked collapse after the apparent failure of Angola's democratic experiment. There appeared to be a retrenchment in the political reform process and many feared the loss of civil liberties, gained in the last period, may follow. At the same time as civil war spread out from Luanda into most provincial towns in early 1993, NGOs stepped in to provide and distribute humanitarian assistance as government services collapsed.

As cities were cut off from their agricultural hinterland the economy declined, investment stopped and confidence evaporated. Prices of commodities rose on average between 30-40 percent per month throughout 1993. Salaries were

either frozen or rose only slowly. The voluntary contributions from members of local NGOs as well as their limited financial assets dried up quickly.

Many local NGOs working in Luanda looked to the Urban Food Bank as a means to subsidize their project staff and field workers as inflation ate into their salaries. The number of projects supported by the Food Bank project increased by 65 percent: from 12 in 1992 to 35 by early 1994.

## **5. OUTPUTS**

The Urban Food Bank project distributed approximately 12,000 food packages averaging 45 kg per package during the fiscal year. This included distribution on a regular monthly basis to almost 800 workers of NGO projects (and their families).

The indirect beneficiaries affected by projects supported by the Urban Food Bank is calculated to be approximately 350,000 people.

### **5.1 Impact on Women**

The sectoral focus of the Urban Food Bank programme has been chosen to target projects which have a direct impact of women in the peri-urban bairros of Luanda. Three of the projects target women specifically and are aimed at training women to increase their economic productive capacity. Several projects focus on water and sanitation and are aimed at improving access to these services for families in the bairros and reducing the time women occupy in fetching water on a daily basis. The majority of projects supported by the Food Bank provide primary health services to bairro families. Women and children are the primary users of these services on a ratio of 3 to 1.

### **5.2 Impact on the Environment**

Projects supported by the Food Bank which directly impact the environment are those in the areas of water and sanitation. Food for work has been used in partners' projects for rubbish clean up campaigns and the digging of drainage channels to reduce stagnant water and control erosion. The Sambizanga Project has used community food for work for urban community tree planting programmes.

## 6. PROGRAMME EVALUATION & MONITORING

In December 1993 and January 1994, Development Workshop carried out an interim assessment of the Urban Food Bank Project with particular attention to reviewing partner projects.

The objectives of the assessment were:

- to get feedback from partners on the how well the overall programme is functioning;
- to solicit recommendations for improvements;
- to evaluate the projects of each partner, member of the Food Bank programme to determine the impact of local projects on the communities targeted and the appropriateness of using food subsidies in each case given the context of the local projects;
- to increase information flow between the projects and the Food Bank Programme
- to create a data base on each project which can be updated regularly and assist in project monitoring.

The assessment team was composed of: an external consultant, and an NGO partner beneficiary, and the Food Bank Programme Manager

A questionnaire was developed and tested by the assessment team and an interview format was decided upon. A plan was drawn up to visit each partner's project(s) and the purpose of the assessment was explained. During the formal visit with project holders an attempt was also made to informally interview project beneficiaries as well to solicit their impressions on the functioning of the programme.

The results of the assessment were organized in a data base summarized as in Project Data Sheets. The project sheets record locational, sectoral and statistical information; followed by a summary report from the data provided by each project holder and recommendations from the assessment team.

The assessment team further made summary conclusions and recommendations for the future of the Food Bank project.

The assessment report is annexed here.

**FINANCIAL REPORT for period: 01 May 1993 - 30 April 1994**

No: CATEGORY	ITEM	CODE	BUDGETED	ACTUAL
<b>1.0 Personnel</b>	Technical Assistance	546		
	Manager, Driver	544	16,600.00	16,600.00
	Consultants/Perdiems	545		
	<b>SUB TOTAL:</b>		<b>16,600.00</b>	<b>16,600.00</b>
<b>2.0 Equipment</b>	Grain Mill	185	4,000.00	4,342.00
	Tools	184		
	Office	186	500.00	
	Communications	190	400.00	750.00
	Computer	191		
	Training & Audio/Vis	187		
	<b>SUB TOTAL</b>		<b>4,900.00</b>	<b>5,092.00</b>
<b>3.0 Materials</b>	Consumables	519	1,000.00	1,000.00
	Construction	554		
	Stationary	520	500.00	500.00
	<b>SUB TOTAL:</b>		<b>1,500.00</b>	<b>1,500.00</b>
<b>4.0 Services</b>	Repairs & Contracts	189	2,500.00	
	Transport from Port	550	1,000.00	2,520.00
	<b>SUB TOTAL:</b>		<b>3,500.00</b>	<b>2,520.00</b>
<b>5.0 Training</b>	Publications	521		
	Printing	510		
	Courses & Seminars	551	1,500.00	
	<b>SUB TOTAL:</b>		<b>1,500.00</b>	<b>0.00</b>
<b>6.0 Travel</b>	Field Trips	530		
	Visiting Consultants	530		
	Home Leave	531		
	<b>SUB TOTAL:</b>		<b>0.00</b>	<b>0.00</b>
<b>7.0 Transport</b>	Vehicle Procurement	183		
	Spare Parts/Repairs	533	2,250.00	4,225.00
	Insurance	534	1,250.00	1,250.00
	<b>SUB TOTAL:</b>		<b>3,500.00</b>	<b>5,475.00</b>
<b>8.0 Procurement &amp; Secretarial</b>		572		
<b>9.0 Monitoring</b>	Program Development	586		
	Reporting/Evaluation	576	1,600.00	1,600.00
	Missions/Conferences	577		
	<b>SUB TOTAL:</b>		<b>1,600.00</b>	<b>1,600.00</b>

No: CATEGORY	ITEM	CODE	BUDGETED	ACTUAL
10.0 NGO Admin	Overhead	570	3,500.00	3,500.00
	Contingency		1,600.00	
* Accounts Payable to World Food Programme-port charges 24,000.00				
<b>TOTAL EXPENDITURE:</b>			38,200.00	36,287.00
<b>BALANCE CARRIED FORWARD:</b>			1,913.00	

C:\DWANG-51293-94RPT.RPT

## **LIST OF PROJECTS**

1. A.E.A. - CEGA CONSTRUCTION PROJECT
2. A.E.A. - KIKOLO HEALTH PROJECT
3. A.E.A. - ADMINISTRATION SUPPORT PROJECT
4. I.E.P.A. - SEWING AND TYPING PROJECT
5. I.P.A. - MARCAL HEALTH CENTRE PROJECT
6. C.B.A. - EMANUEL HEALTH CENTRE PROJECT
7. U.I.E.A. - SEWING CENTRE PROJECT
8. I.E.B.A. - CONSTRUCTION JOB PROJECT
9. I.E.B.A.-COMMUNITY HEALTH CENTRE+MEDICAL LAB. PROJ
10. LOCAL GOVERNMENT N'GOLA KILUANJE, LITERACY CENTRE PROJ.
11. I.E.I.A. - TRAINING SCHOOL FOR HEALTH PROMOTERS
12. S.C.A.M. - PREVENTIVE HEALTH PROJECT
13. S.C.A.M. - PALANCA PREVENTIVE HEALTH PROJECT
14. S.C.A.M. - GOLF II HEALTH CENTRE PROJECT
15. A.C.J. - KILAMBA KIAXI HEALTH CENTRE PROJECT
16. M.I.N.S.A. - N'GOLA KILUANJE HEALTH CENTRE PROJECT
17. U.S.O.D.E.C.- PUBLIC HEALTH CENTRE PROJECT
18. U.S.O.D.E.C.- TEACHING + TRAINING PROJECT
19. I.E.R.A. - ROCHA PINTO HEALTH CENTRE PROJECT
20. I.E.A. - HEALTH CENTRE PROJECT
21. D.W. - SAMBIZANGA COMMUNITY DEVELOPMENT PROJECT
22. D.W. - CACUACO BUILDING YARD PROJECT
23. I.E.S.P.A. - SAMBA MEDICAL CENTRE PROJECT
24. TRINIDADE CHILD CENTRE-TEACHING AND TRAINING PROJECT
25. C.V.A. - NUTRITIONAL RECUPERATION PROJECT
26. P.H.C.O. - ROCHA PINTO MEDICAL CENTRE PROJECT
27. P.H.C.O. - ROCHA PINTO PRIMARY SCHOOL PROJECT
28. ACM/YMCA - MABOR MEDICAL CENTRE PROJECT
29. ACM/YMCA - CUTTING AND SEWING CENTRE PROJECT
30. ACM/YMCA - PALANCA SOCIAL CENTRE PROJECT
31. ACM/YMCA - STAFF TRAINING CENTRE PROJECT
32. FONGA - AID TO ADMINISTRATIVE PERSONNEL

## **LIST OF PROJECTS**

1. A.E.A. - CEGA CONSTRUCTION PROJECT
2. A.E.A. - KIKOLO HEALTH PROJECT
3. A.E.A. - ADMINISTRATION SUPPORT PROJECT
4. I.E.P.A. - SEWING AND TYPING PROJECT
5. I.P.A. - MARCAL HEALTH CENTRE PROJECT
6. C.B.A. - EMANUEL HEALTH CENTRE PROJECT
7. U.I.E.A. - SEWING CENTRE PROJECT
8. I.E.B.A. - CONSTRUCTION JOB PROJECT
9. I.E.B.A.-COMMUNITY HEALTH CENTRE+MEDICAL LAB. PROJ
10. LOCAL GOVERNMENT N'GOLA KILUANJE, LITERACY CENTRE PROJ.
11. I.E.I.A. - TRAINING SCHOOL FOR HEALTH PROMOTERS
12. S.C.A.M. - PREVENTIVE HEALTH PROJECT
13. S.C.A.M. - PALANCA PREVENTIVE HEALTH PROJECT
14. S.C.A.M. - GOLF II HEALTH CENTRE PROJECT
15. A.C.J. - KILAMBA KIAXI HEALTH CENTRE PROJECT
16. M.I.N.S.A. - N'GOLA KILUANJE HEALTH CENTRE PROJECT
17. U.S.O.D.E.C.- PUBLIC HEALTH CENTRE PROJECT
18. U.S.O.D.E.C.- TEACHING + TRAINING PROJECT
19. I.E.R.A. - ROCHA PINTO HEALTH CENTRE PROJECT
20. I.E.A. - HEALTH CENTRE PROJECT
21. D.W. - SAMBIZANGA COMMUNITY DEVELOPMENT PROJECT
22. D.W. - CACUACO BUILDING YARD PROJECT
23. I.E.S.P.A. - SAMBA MEDICAL CENTRE PROJECT
24. TRINIDADE CHILD CENTRE-TEACHING AND TRAINING PROJECT
25. C.V.A. - NUTRITIONAL RECUPERATION PROJECT
26. P.H.C.O. - ROCHA PINTO MEDICAL CENTRE PROJECT
27. P.H.C.O. - ROCHA PINTO PRIMARY SCHOOL PROJECT
28. ACM/YMCA - MABOR MEDICAL CENTRE PROJECT
29. ACM/YMCA - CUTTING AND SEWING CENTRE PROJECT
30. ACM/YMCA - PALANCA SOCIAL CENTRE PROJECT
31. ACM/YMCA - STAFF TRAINING CENTRE PROJECT
32. FONGA - AID TO ADMINISTRATIVE PERSONNEL

**URBAN FOOD-BANK PROJECT**

**REPORT ON**

**PARTNER PROJECTS**

**1994**

## **1. INTRODUCTION**

The Luanda Urban Food Bank provides supplementary food rations to workers of NGOs in Angola involved in small-scale development projects in the Luanda region. The programme is funded by the Canadian Baptist Relief and Development Committee (CBRDC); food commodities are provided by the Canadian Food Grains Bank.

In December 1993 and January 1994, Development Workshop carried out an interim assessment of the Urban Food Bank Project to review partner projects. The objectives of the assessment were:

- to get feedback from partners on the how well the overall programme is functioning;
- to solicit recommendations for improvements;
- to evaluate the projects of each partner, member of the Food Bank programme to determine the impact of local projects on the communities targeted and the appropriateness of using food subsidies in each case given the context of the local projects;
- to increase information flow between the projects and the Food Bank Programme
- to create a data base on each project which can be updated regularly and assist in project monitoring.

The assessment team was composed of: an external consultant, and an NGO partner beneficiary, and the Food Bank Programme Manager. A questionnaire was developed and tested by the assessment team and an interview format was decided upon. A plan was drawn up to visit each partner's project(s) and the purpose of the assessment was explained. During the formal visit with project holders an attempt was also made to informally interview project beneficiaries as well to solicit their impressions on the functioning of the programme.

The results of the assessment were organized in a data base summarized as in Project Data Sheets. The project sheets record locational, sectoral and statistical information; followed by a summary report from the data provided by each project holder and recommendations from the assessment team. seeing in loco all the above mentioned projects, getting a general idea on the functioning of such projects, make direct contact with the project leaders and workers, and evaluate the degree of impact of all this work in direct or indirect relation to the communities.

Some of the field projects were difficult to reach because of poor road conditions. Apart from the 4 projects in Viana (1), Cacuaco (2) and Futungo (1), all others are located in the peri-urban bairros of Luanda, with very bad access roads leading to them, thus making work more difficult.

This report contains all the information gathered and some conclusions and recommendations with regard to the project.

## **2. GENERAL FINDINGS AND RECOMMENDATIONS**

- For the duration of the Urban Foodbank Project, it is important to hold annual

evaluations, substantiated by visits to all projects and direct contact with workers benefitting from this aid. This would be a way of getting direct information on the life and functioning of projects that are supported and to assess the impact of the aid on the beneficiaries themselves. It would also help Development Workshop/foodbank to exchange experiences with other NGOs and their respective communities.

- It is recommended that the foodbank beneficiaries present annual reports on their work as well as on the use of the products received, and any other information on the relations between the foodbank and beneficiaries that could be useful to Development Workshop/foodbank and to any other partners who support the foodbank project.
- It became evident during the evaluation that some projects experience difficulties in the management of certain aspects of their projects. It is suggested that additional help be provided in training and preparing managers and project leaders.
- The members of the evaluation team are not medical experts but suggest that, in professional and health terms, there exist certain gaps in the health projects and it would be useful to meet and exchange experiences in debates, seminars and workshops especially planned for technicians and staff of this sector.
- Difficulties were encountered in project management and administration of several of the projects supported by the Foodbank, due to the lack of experience of key staff of some of the local partners. Some local project managers were unable to produce required documentation data on their work. It is recommended that training be encouraged on the subject of project management and administration and project monitoring.
- The foodbank project has been welcomed by NGO partners benefiting from this aid. Workers at all levels appreciate the foodbank for its social contribution. Although NGOs and church projects can survive without this aid, any interruption in the distribution of the aid would create great problems for the various beneficiaries.
- The evaluation team noted that, in practice, the distribution has not gone as programmed. Along with the usual problems, the projects seem to serve more beneficiaries than the ones usually directly involved in each project. This is for various reasons linked to the life and running of the respective organisations in the churches.
- Almost half of the organizations and churches benefitting from aid had no way of furnishing exact data on quantities of food already received. This leads us to believe that the goods are controlled only upon receipt and distribution and then all is forgotten, including the value of these same goods.
- The foodbank project has greatly helped churches and NGOs to retain their staff in general and the trained ones in particular, who are much needed in these institutions. Financial difficulties make it impossible for them to remunerate project employees in other ways.
- Beneficiaries commented on the choice of products offered; they suggested

diversifying in future with other more important basic goods such as rice, sugar, and maize meal instead of the grain itself (corn).

- It is recommended that in the case of new beneficiaries, a documented evaluation of the project be made as well as a visit to the site to verify the project's existence, functioning and other factors, in order to assess the appropriateness of Foodbank assistance.
- There sometimes exists a misunderstanding regarding the aid offered by the Development Workshop's Food-bank. Many organizations and churches don't know the real objectives of this food aid and think the foodbank is an agency that offers food products to help new projects to start up.

REF:	ORGANIZATION	SECTOR	RECIPIENTS	BENEFICIARIES	IMPACT	STATUS	OBSERVATIONS:
512-01	AEA	Building	17	100	Good	Ongoing	Continued Support
512-02	AEA	Health	9	14,400	Good	Ongoing	Continued Support
512-03	AEA	Institutional	12	85	Good	Ongoing	Continued Support
512-04	IEPA	Women	6	415	Good	Ongoing	Continued Support
512-05	IPA	Health	6	360	Low	Discontin	No Further Support
512-06	CBA	Health	7	18,000	Good	Proposal	Recommended
512-07	UIEA	Women	7	80	Moderate	Proposal	Recommended
512-08	IEIA	Building	10	27	Moderate	Ongoing	Continued Support
512-09	IEBA	Health	27	37,400	Good	Proposal	Recommended
512-10	ACNC	Literacy	25	n/a	n/a	Proposal	Not Approved
512-11	IEIA	Training	9	80	Good	Ongoing	Continued Support
512-12	SCAM	Health	8	21,600	Low	Proposal	Provisional 6 months
512-13	SCAM	Health	6	21,600	Low	Proposal	Provisional 6 months
512-14	SCAM	Health	7	15,000	Moderate	Proposal	Provisional 6 months
512-15	ACJ	Health	26	14,400	Good	Ongoing	Continued Support
512-16	MINSA	Health	59	25,200	Good	Ongoing	Continued Support
512-17	USODEC	Health	15	10,800	Good	Ongoing	Continued Support
512-18	USODEC	Training	15	650	Good	Ongoing	Continued Support
512-19	IERA	Health	19	19,800	Good	Ongoing	Continue Support
512-20	IEA	Health	12	5,400	Moderate	Ongoing	Continue Support
512-21	AANK/DW	Water/Sani	87	120,000	Good	Ongoing	Continue Support
512-22	DW	Water/Sani	30	20,000	Good	Ongoing	Continue Support
512-23	IESPA	Health	3	100	Poor	Proposal	Not Approved
512-24	TRINDADE	Children	21	n/a	n/a	Proposal	Deferred
512-25	CVA	Nutrition	n/a	n/a	Good	Re-Start	Deferred
512-26	PHCO	Health	8	n/a	Poor	Proposal	Not Approved
512-27	PHCO	Education	2	n/a	Low	Proposal	Not Approved
512-28	ACM/YMCA	Health	4	312	Low	Ongoing	Provisional 6 months
512-29	ACM/YWCA	Women	10	329	Low	Ongoing	Provisional 6 months
512-30	ACM/YMCA	Education	11	310	Moderate	Proposal	Provisional 6 months
512-31	ACM/YMCA	Education	36	40	Good	Ongoing	Continue Support
512-32	FONGA	Institutional	13	n/a	Good	Ongoing	Continue Support
512-33	DWB	Upgrading	50	400	Good	Ongoing	Continue Support
512-34	APV	Children	n/a	n/a			
512-35	APV	AIDS	n/a	n/a			
512-36	IMA	Education	n/a	n/a			
512-37	Com-Theatre	Com.Devel	n/a	n/a			

REF:	ORGANIZATION	SECTOR	RECIPIENTS	BENEFICIARIES	IMPACT	STATUS	OBSERVATIONS:
512-01	AEA	Building	17	100	Good	Ongoing	Continued Support
512-02	AEA	Health	9	14,400	Good	Ongoing	Continued Support
512-03	AEA	Institutional	12	85	Good	Ongoing	Continued Support
512-04	IEPA	Women	6	415	Good	Ongoing	Continued Support
512-05	IPA	Health	6	360	Low	Discontin	No Further Support
512-06	CBA	Health	7	18,000	Good	Proposal	Recommended
512-07	UIEA	Women	7	80	Moderate	Proposal	Recommended
512-08	IEIA	Building	10	27	Moderate	Ongoing	Continued Support
512-09	IEBA	Health	27	37,400	Good	Proposal	Recommended
512-10	ACNC	Literacy	25	n/a	n/a	Proposal	Not Approved
512-11	IEIA	Training	9	80	Good	Ongoing	Continued Support
512-12	SCAM	Health	8	21,600	Low	Proposal	Provisional 6 months
512-13	SCAM	Health	6	21,600	Low	Proposal	Provisional 6 months
512-14	SCAM	Health	7	15,000	Moderate	Proposal	Provisional 6 months
512-15	ACJ	Health	26	14,400	Good	Ongoing	Continued Support
512-16	MINSA	Health	59	25,200	Good	Ongoing	Continued Support
512-17	USODEC	Health	15	10,800	Good	Ongoing	Continued Support
512-18	USODEC	Training	15	650	Good	Ongoing	Continued Support
512-19	IERA	Health	19	19,800	Good	Ongoing	Continue Support
512-20	IEA	Health	12	5,400	Moderate	Ongoing	Continue Support
512-21	AANK/DW	Water/Sani	87	120,000	Good	Ongoing	Continue Support
512-22	DW	Water/Sani	30	20,000	Good	Ongoing	Continue Support
512-23	IESPA	Health	3	100	Poor	Proposal	Not Approved
512-24	TRINDADE	Children	21	n/a	n/a	Proposal	Deferred
512-25	CVA	Nutrition	n/a	n/a	Good	Re-Start	Deferred
512-26	PHCO	Health	8	n/a	Poor	Proposal	Not Approved
512-27	PHCO	Education	2	n/a	Low	Proposal	Not Approved
512-28	ACM/YMCA	Health	4	312	Low	Ongoing	Provisional 6 months
512-29	ACM/YWCA	Women	10	329	Low	Ongoing	Provisional 6 months
512-30	ACM/YMCA	Education	11	310	Moderate	Proposal	Provisional 6 months
512-31	ACM/YMCA	Education	36	40	Good	Ongoing	Continue Support
512-32	FONGA	Institutional	13	n/a	Good	Ongoing	Continue Support
512-33	DWB	Upgrading	50	400	Good	Ongoing	Continue Support
512-34	APV	Children	n/a	n/a			
512-35	APV	AIDS	n/a	n/a			
512-36	IMA	Education	n/a	n/a			
512-37	Com-Theatre	Com.Devel	n/a	n/a			

REF:	ORGANIZATION	SECTOR	RECIPIENTS	BENEFICIARIES	IMPACT	STATUS	OBSERVATIONS:
512-01	AEA	Building	17	100	Good	Ongoing	Continued Support
512-02	AEA	Health	9	14,400	Good	Ongoing	Continued Support
512-03	AEA	Institutional	12	85	Good	Ongoing	Continued Support
512-04	IEPA	Women	6	415	Good	Ongoing	Continued Support
512-05	IPA	Health	6	360	Low	Discontin	No Further Support
512-06	CBA	Health	7	18,000	Good	Proposal	Recommended
512-07	UIEA	Women	7	80	Moderate	Proposal	Recommended
512-08	IEIA	Building	10	27	Moderate	Ongoing	Continued Support
512-09	IEBA	Health	27	37,400	Good	Proposal	Recommended
512-10	ACNC	Literacy	25	n/a	n/a	Proposal	Not Approved
512-11	IEIA	Training	9	80	Good	Ongoing	Continued Support
512-12	SCAM	Health	8	21,600	Low	Proposal	Provisional 6 months
512-13	SCAM	Health	6	21,600	Low	Proposal	Provisional 6 months
512-14	SCAM	Health	7	15,000	Moderate	Proposal	Provisional 6 months
512-15	ACJ	Health	26	14,400	Good	Ongoing	Continued Support
512-16	MINSA	Health	59	25,200	Good	Ongoing	Continued Support
512-17	USODEC	Health	15	10,800	Good	Ongoing	Continued Support
512-18	USODEC	Training	15	650	Good	Ongoing	Continued Support
512-19	IERA	Health	19	19,800	Good	Ongoing	Continue Support
512-20	IEA	Health	12	5,400	Moderate	Ongoing	Continue Support
512-21	AANK/DW	Water/Sani	87	120,000	Good	Ongoing	Continue Support
512-22	DW	Water/Sani	30	20,000	Good	Ongoing	Continue Support
512-23	IESPA	Health	3	100	Poor	Proposal	Not Approved
512-24	TRINDADE	Children	21	n/a	n/a	Proposal	Deferred
512-25	CVA	Nutrition	n/a	n/a	Good	Re-Start	Deferred
512-26	PHCO	Health	8	n/a	Poor	Proposal	Not Approved
512-27	PHCO	Education	2	n/a	Low	Proposal	Not Approved
512-28	ACM/YMCA	Health	4	312	Low	Ongoing	Provisional 6 months
512-29	ACM/YWCA	Women	10	329	Low	Ongoing	Provisional 6 months
512-30	ACM/YMCA	Education	11	310	Moderate	Proposal	Provisional 6 months
512-31	ACM/YMCA	Education	36	40	Good	Ongoing	Continue Support
512-32	FONGA	Institutional	13	n/a	Good	Ongoing	Continue Support
512-33	DWB	Upgrading	50	400	Good	Ongoing	Continue Support
512-34	APV	Children	n/a	n/a			
512-35	APV	AIDS	n/a	n/a			
512-36	IMA	Education	n/a	n/a			
512-37	Com-Theatre	Com.Devel	n/a	n/a			

REF:	ORGANIZATION	SECTOR	RECIPIENTS	BENEFICIARIES	IMPACT	STATUS	OBSERVATIONS:
512-01	AEA	Building	17	100	Good	Ongoing	Continued Support
512-02	AEA	Health	9	14,400	Good	Ongoing	Continued Support
512-03	AEA	Institutional	12	85	Good	Ongoing	Continued Support
512-04	IEPA	Women	6	415	Good	Ongoing	Continued Support
512-05	IPA	Health	6	360	Low	Discontin	No Further Support
512-06	CBA	Health	7	18,000	Good	Proposal	Recommended
512-07	UIEA	Women	7	80	Moderate	Proposal	Recommended
512-08	IEIA	Building	10	27	Moderate	Ongoing	Continued Support
512-09	IEBA	Health	27	37,400	Good	Proposal	Recommended
512-10	ACNC	Literacy	25	n/a	n/a	Proposal	Not Approved
512-11	IEIA	Training	9	80	Good	Ongoing	Continued Support
512-12	SCAM	Health	8	21,600	Low	Proposal	Provisional 6 months
512-13	SCAM	Health	6	21,600	Low	Proposal	Provisional 6 months
512-14	SCAM	Health	7	15,000	Moderate	Proposal	Provisional 6 months
512-15	ACJ	Health	26	14,400	Good	Ongoing	Continued Support
512-16	MINSA	Health	59	25,200	Good	Ongoing	Continued Support
512-17	USODEC	Health	15	10,800	Good	Ongoing	Continued Support
512-18	USODEC	Training	15	650	Good	Ongoing	Continued Support
512-19	IERA	Health	19	19,800	Good	Ongoing	Continue Support
512-20	IEA	Health	12	5,400	Moderate	Ongoing	Continue Support
512-21	AANK/DW	Water/Sani	87	120,000	Good	Ongoing	Continue Support
512-22	DW	Water/Sani	30	20,000	Good	Ongoing	Continue Support
512-23	IESPA	Health	3	100	Poor	Proposal	Not Approved
512-24	TRINDADE	Children	21	n/a	n/a	Proposal	Deferred
512-25	CVA	Nutrition	n/a	n/a	Good	Re-Start	Deferred
512-26	PHCO	Health	8	n/a	Poor	Proposal	Not Approved
512-27	PHCO	Education	2	n/a	Low	Proposal	Not Approved
512-28	ACM/YMCA	Health	4	312	Low	Ongoing	Provisional 6 months
512-29	ACM/YWCA	Women	10	329	Low	Ongoing	Provisional 6 months
512-30	ACM/YMCA	Education	11	310	Moderate	Proposal	Provisional 6 months
512-31	ACM/YMCA	Education	36	40	Good	Ongoing	Continue Support
512-32	FONGA	Institutional	13	n/a	Good	Ongoing	Continue Support
512-33	DWB	Upgrading	50	400	Good	Ongoing	Continue Support
512-34	APV	Children	n/a	n/a			
512-35	APV	AIDS	n/a	n/a			
512-36	IMA	Education	n/a	n/a			
512-37	Com-Theatre	Com.Devel	n/a	n/a			

**FINANCIAL REPORT for period: 01 May 1993 - 30 April 1994**

No: CATEGORY	ITEM	CODE	BUDGETED	ACTUAL
<b>1.0 Personnel</b>	Technical Assistance	546		
	Manager, Driver	544	16,600.00	16,600.00
	Consultants/Perdiems	545		
	<b>SUB TOTAL:</b>		<b>16,600.00</b>	<b>16,600.00</b>
<b>2.0 Equipment</b>	Grain Mill	185	4,000.00	4,342.00
	Tools	184		
	Office	186	500.00	
	Communications	190	400.00	750.00
	Computer	191		
	Training & Audio/Vis	187		
	<b>SUB TOTAL</b>		<b>4,900.00</b>	<b>5,092.00</b>
<b>3.0 Materials</b>	Consumables	519	1,000.00	1,000.00
	Construction	554		
	Stationary	520	500.00	500.00
	<b>SUB TOTAL:</b>		<b>1,500.00</b>	<b>1,500.00</b>
<b>4.0 Services</b>	Repairs & Contracts	189	2,500.00	
	Transport from Port	550	1,000.00	2,520.00
	<b>SUB TOTAL:</b>		<b>3,500.00</b>	<b>2,520.00</b>
<b>5.0 Training</b>	Publications	521		
	Printing	510		
	Courses & Seminars	551	1,500.00	
	<b>SUB TOTAL:</b>		<b>1,500.00</b>	<b>0.00</b>
<b>6.0 Travel</b>	Field Trips	530		
	Visiting Consultants	530		
	Home Leave	531		
	<b>SUB TOTAL:</b>		<b>0.00</b>	<b>0.00</b>
<b>7.0 Transport</b>	Vehicle Procurement	183		
	Spare Parts/Repairs	533	2,250.00	4,225.00
	Insurance	534	1,250.00	1,250.00
	<b>SUB TOTAL:</b>		<b>3,500.00</b>	<b>5,475.00</b>
<b>8.0 Procurement &amp; Secretarial</b>		572		
<b>9.0 Monitoring</b>	Program Development	586		
	Reporting/Evaluation	576	1,600.00	1,600.00
	Missions/Conferences	577		
	<b>SUB TOTAL:</b>		<b>1,600.00</b>	<b>1,600.00</b>

No: CATEGORY	ITEM	CODE	BUDGETED	ACTUAL
10.0 NGO Admin	Overhead	570	3,500.00	3,500.00
	Contingency		1,600.00	
<b>* Accounts Payable to World Food Programme-port charges</b>			<b>24,000.00</b>	
<b>TOTAL EXPENDITURE:</b>			<b>38,200.00</b>	<b>36,287.00</b>
<b>BALANCE CARRIED FORWARD:</b>			<b>1,913.00</b>	

C:\DWWANG-51293-94RPT.RPT

**FINANCIAL REPORT for period: 01 May 1993 - 30 April 1994**

No: CATEGORY	ITEM	CODE	BUDGETED	ACTUAL
<b>1.0 Personnel</b>	Technical Assistance	546		
	Manager, Driver	544	16,600.00	16,600.00
	Consultants/Perdiems	545		
	<b>SUB TOTAL:</b>		<b>16,600.00</b>	<b>16,600.00</b>
<b>2.0 Equipment</b>	Grain Mill	185	4,000.00	4,342.00
	Tools	184		
	Office	186	500.00	
	Communications	190	400.00	750.00
	Computer	191		
	Training & Audio/Vis	187		
	<b>SUB TOTAL</b>		<b>4,900.00</b>	<b>5,092.00</b>
<b>3.0 Materials</b>	Consumables	519	1,000.00	1,000.00
	Construction	554		
	Stationary	520	500.00	500.00
	<b>SUB TOTAL:</b>		<b>1,500.00</b>	<b>1,500.00</b>
<b>4.0 Services</b>	Repairs & Contracts	189	2,500.00	
	Transport from Port	550	1,000.00	2,520.00
	<b>SUB TOTAL:</b>		<b>3,500.00</b>	<b>2,520.00</b>
<b>5.0 Training</b>	Publications	521		
	Printing	510		
	Courses & Seminars	551	1,500.00	
	<b>SUB TOTAL:</b>		<b>1,500.00</b>	<b>0.00</b>
<b>6.0 Travel</b>	Field Trips	530		
	Visiting Consultants	530		
	Home Leave	531		
	<b>SUB TOTAL:</b>		<b>0.00</b>	<b>0.00</b>
<b>7.0 Transport</b>	Vehicle Procurement	183		
	Spare Parts/Repairs	533	2,250.00	4,225.00
	Insurance	534	1,250.00	1,250.00
	<b>SUB TOTAL:</b>		<b>3,500.00</b>	<b>5,475.00</b>
<b>8.0 Procurement &amp; Secretarial</b>		572		
<b>9.0 Monitoring</b>	Program Development	586		
	Reporting/Evaluation	576	1,600.00	1,600.00
	Missions/Conferences	577		
	<b>SUB TOTAL:</b>		<b>1,600.00</b>	<b>1,600.00</b>

No: CATEGORY	ITEM	CODE	BUDGETED	ACTUAL
10.0 NGO Admin	Overhead	570	3,500.00	3,500.00
	Contingency		1,600.00	
* Accounts Payable to World Food Programme-port charges 24,000.00				
<b>TOTAL EXPENDITURE:</b>			38,200.00	36,287.00
<b>BALANCE CARRIED FORWARD:</b>			1,913.00	

C:\DWANG-51293-94RPT.RPT

PROJECT DATA SHEET No: 01

**Project Name:**

CEGA - Construction Project

**Location:**

Bairro Futungo, Luanda

**Organization:**

EVANGELICAL ASSOCIATION OF  
ANGOLA (A.E.A.)

**Activity Sector:**

Construction

**Direct Participants:**

17 Construction Workers

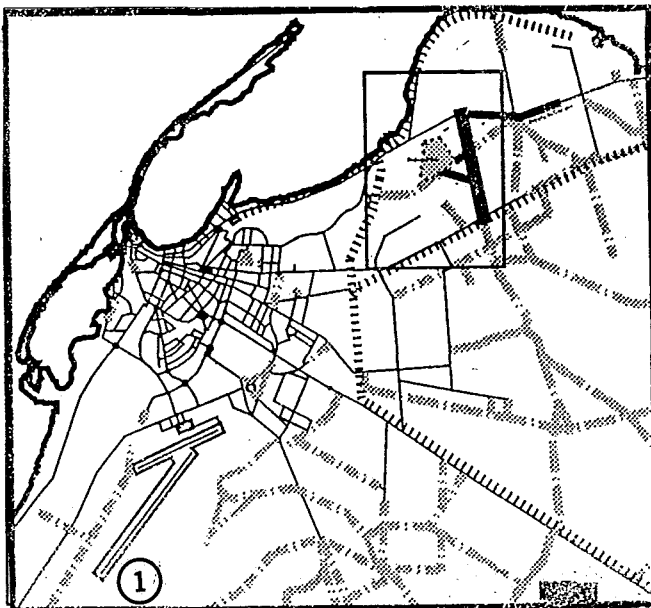
**Beneficiaries Affected:**

100 (plus Member Church congregations)

**Project Description:**

The AEA is a confederation of various evangelical churches and its project support office not only manages the social and humanitarian projects of the association but assists member churches in the development of projects, fundraising and liaison with donors. The food bank programme assists the staff of AEA's programme support unit.

The AEA has undertaken the construction of a Management Centre and residential area to accommodate their programme office. Of the buildings under construction, some will be used as living quarters, some for general A.E.A. administration purposes, some for student training and others for social services including a collective kitchen and dining-hall.



There is a total of 17 people working on the site, including carpenters, bricklayers, electricians, and plumbers. They have completed the surrounding wall as well as 7 houses. The work should be finished by late 1994.

**Conclusion:**

This project is working quite well and seemingly, all human and material conditions are guaranteed; the work is proceeding to schedule.

**Contact:**

Mr. Jonas Dark Sousa (In charge of works)

## PROJECT DATA SHEET No: 02

**Project Name:**

Health Centre in Kikolo

**Location:**

Kikolo, Cacuaco Municipality

**Organization:**

EVANGELICAL ASSOCIATION OF  
ANGOLA (A.E.A.)

**Activity Sector:**

Primary Health

**Direct Participants:**

9 Staff

**Beneficiaries Affected:**

14,400 Local Users per year

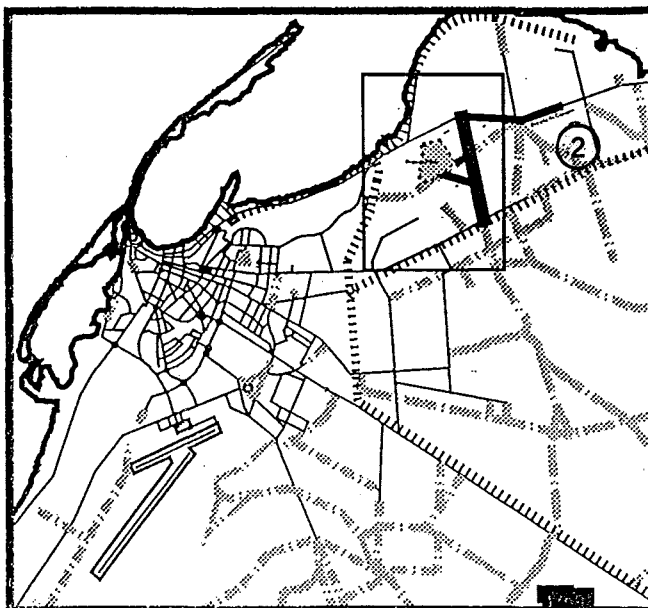
**Project Description:**

This health centre in Kikolo, belonging to the A.E.A has been operational since December 4th 1992.

According to Dr. A. Saul, director of the project, the centre offers the following: training of public health promoters, staff upgrading courses, vaccination for women and children, health education classes and regular medical consultations.

The building comprises of a small reception room, a doctor's office, a treatment room, a small pharmacy and office, as well as a small bathroom divided in two. Beside this building is a container/classroom used at the moment as a storeroom. A proper classroom is in its finishing stages. The centre is wired for electricity and also has a water reserve tank. This centre is well organized and clean. Patients registers and files appeared to be well maintained and in order.

The management for this project is good and serves well the surrounding community.



Seven people are employed at the centre (2 men and 5 women). They started receiving food aid at the end of the first quarter and this has proven extremely useful and indispensable supplement to staff salaries.

**Conclusion:**

This project is operating very well in conformity with the human and material means available. They are generally ahead in their plans and are organizing future ones. This project is situated in a peri-urban bairro and undoubtedly has an important impact on the local community.

**Contact:**

Dr. Alexander Saul (Project Director)

PROJECT DATA SHEET No: 03

**Project Name:**

Institutional Support

**Location:**

Luanda

**Organization:**

EVANGELICAL ASSOCIATION OF  
ANGOLA (A.E.A.) Project Support Unit

**Activity Sector:**

Institutional Support

**Direct Participants:**

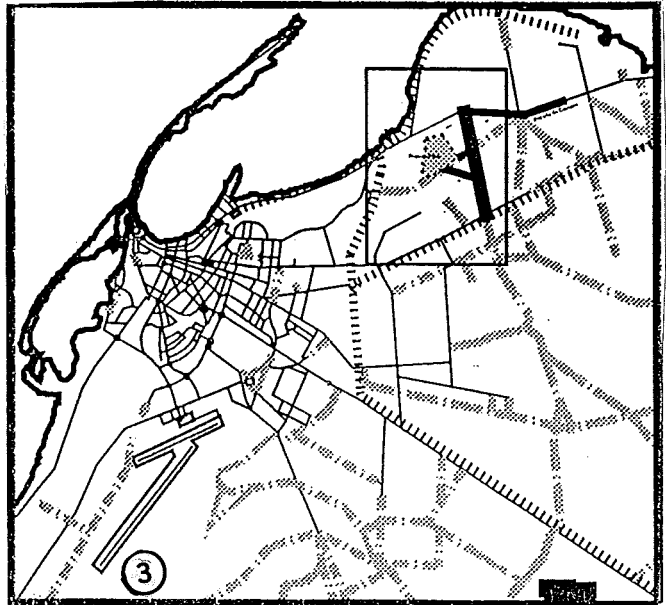
12 Staff Members

**Beneficiaries Affected:**

85 Project Members assisted

**Project Description:**

The A.E.A. project management team consists of 12 people (6 men, 6 women) who benefit from the food for work project. The members administer projects linked and belonging to the A.E.A., as well as coordinate projects of member churches. The management team's benefit from the foodbank support which in turn has benefits for the whole organization which has limited financial resources.



**Conclusion:**

This is a management team of a relatively large institution who support a wide variety of projects for member churches. Foodbank support to this programme support unit therefore indirectly affects a large number of local church initiatives.

**Contact Person:**

Mr. Amandio Albano Mavela  
Programme Director

**PROJECT DATA SHEET No: 04**

**Project Name:**

Women's Training Project

**Location:**

Bairro Rangel

**Organization:**

EVANGELICAL PENTECOSTAL CHURCH OF ANGOLA (I.E.P.A.)

**Activity Sector:**

Women / Training

**Direct Participants:**

6 Teachers

**Beneficiaries Affected:**

415 Students

**Project Description:**

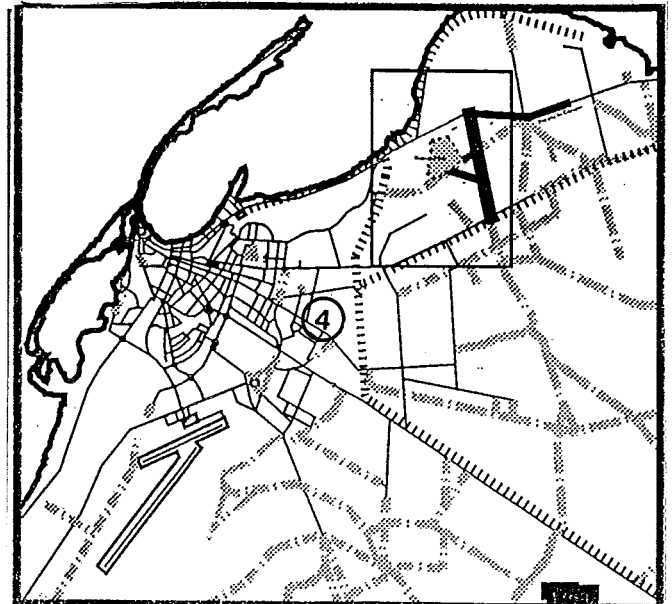
The I.E.P.A. is a member of the A.E.A. This project consists of teaching women to sew and type, and is located in the church's headquarters in the peri-urban bairro of Rangel.

This course has 25 students enrolled in it. The typing course is given in the church itself for lack of separate installations, and 20 students are taking part. All students are church members and live in the surrounding community. They must pay a fee to finance this project. Six persons are involved with the project, namely, the project director, a headmistress and four teachers.

Despite the many difficulties encountered, the staff appear dynamic and has successfully enrolled a number of local women.

Foodbank aid is used as an incentive to enlist project workers and helpers. Salaries on their own are not sufficient to sustain programme staff.

In a meeting the church leaders expressed



their appreciation of the foodbank aid but indicated a problem that food assistance was limited distribution to project workers only and not extended to other church workers. This situation is creating growing difficulties. On the basis of this, the church leaders have solicited extra food rations for 8 more of its staff members through their official letter No. 153/GRL/93.

**Conclusions:**

This project is functioning well despite certain material limitations such as the lack of work space. Church leaders wish to construct separate classroom/workshop facilities. It should be explained to the church leaders that the Foodbank programme is mandated to support social and production related projects and only administrative support activities related to projects.

Continued support is recommended.

**Contact:**

Mr. Fernando Antonio Domingos  
Director of school

## PROJECT DATA SHEET No: 05

**Project Name:**

Health Post in Marcal

**Location:**

Marcal Bairro, Rangel Municipality

**Organization:**

PRESBYTERIAN CHURCH OF ANGOLA  
(I.P.A.)

**Activity Sector:**

Health

**Direct Participants:**

6 Staff

**Beneficiaries Affected:**

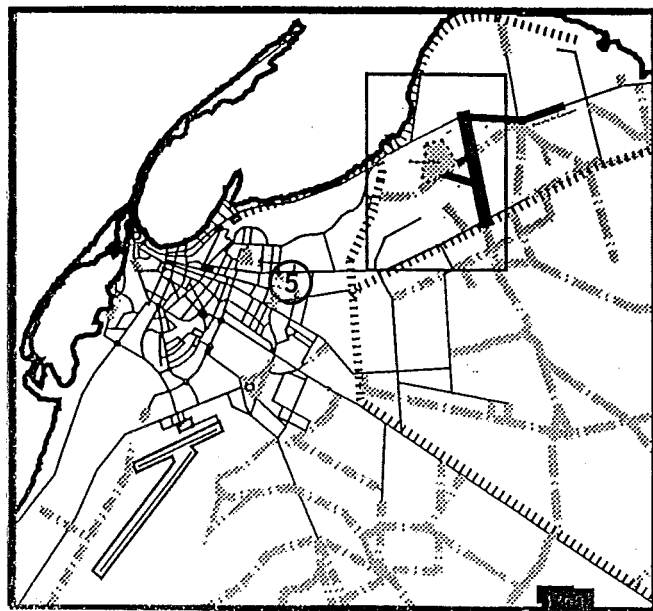
360 per year

**Project Description:**

The I.P.A., is a member of the A.E.A. This centre run by the I.P.A. in the peri-urban bairro of Marcal is located in the same building as the church, in the Sao Paulo area. It was opened to the public in 1991 and is still in operation. There is a regular staff of six. The evaluation team found a high degree of staff absenteeism and found it difficult to locate workers to interview.

The building is in a poor state of repair and offers inadequate hygienic conditions for a project of this nature. A level of disorganization is apparent. The level of professional qualification of staff appears to be low. The staff keep no register of patients and the files are confused. The health centre was visited on two consecutive days in order to find sufficient working staff to interview.

The foodbank aid is kept in a storage place in another area of Luanda where the staff are said go to pick up their rations.



This appears project have little impact on the local community. The evaluation team was informed that the staff includes 2 doctors but were unable to confirm this fact.

The project started receiving food aid in June 1993.

**Conclusion:**

The project in its present form is encountering serious problems of poor - physical conditions

- staff capabilities
- patient flow

Until restructuring and upgrading of the project is undertaken it is recommended to discontinue Foodbank assistance for the time being and reassess the project at a later date.

**Contact:**

Mr. Sebastiao Kiala (Head of project)

## PROJECT DATA SHEET No: 06

**Project Name:**

Emanuel Medical Centre

**Location:**

Bairro 4 Fevereiro, Cacuaco Municipality

**Organization:**

BAPTIST CONVENTION OF ANGOLA  
(C.B.A.)

**Activity Sector:**

Health

**Direct Participants:**

7 Staff

**Beneficiaries Affected:**

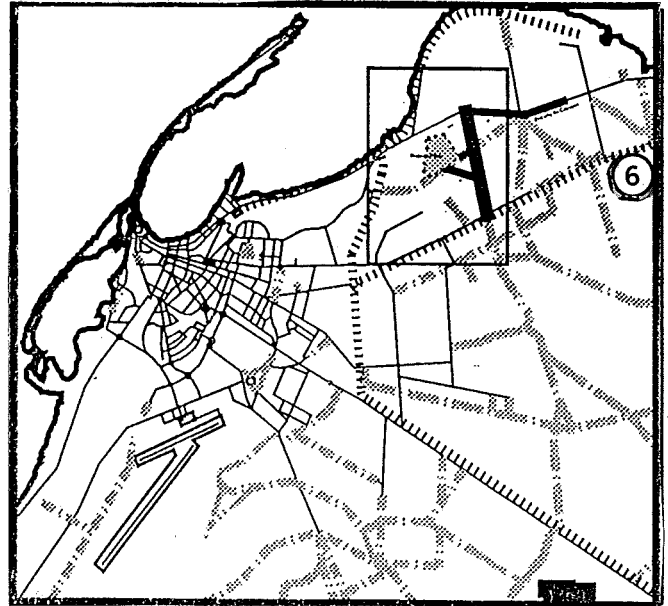
18,000

**Project Description:**

The C.B.A. is a member of the A.E.A. This church is a new beneficiary, or rather, they have applied for help and haven't yet started to receive foodbank aid.

The Emanuel medical centre is located in the 4th of February peri-urban bairro of Cacuaco municipality (otherwise known as Ecocampo). This peri-urban bairro has an estimated population of over 3,000 people and the project also extends to a radius of surrounding population on the outskirts of the peri-urban bairro.

The project involves primary health care, preventive care along with the regular general practice, paediatrics and lab analysis. The building is sound and well kept and is divided as follows: reception room and registry office, doctors' consultation room, infirmary, observation room, small lab and the project's administration area. The medical centre is open daily from 7:30 to 16:00 but closes at night. A night-duty nurse is available for patients in need of overnight hospitalization. Mr. Andre Miranda, the lab technician and assistant head of the centre informed that they



receive some aid in the form of medicines but also buy certain supplies in the local markets. Patients must pay for their prescriptions in the small pharmacy so as to help the project survive.

The staff of 7 consists of administrative personnel, nurses and auxiliaries. The centre treats about 20 new patients per day along with their normal ones with ongoing treatment.

As social conditions are worsening any aid from the foodbank would be extremely useful and gratefully received.

**Conclusion:**

This project is fully functional, has basic working conditions and could naturally benefit from extra material aid to improve their work. The project has a very good impact on the community as it is the only one of its kind existing in the zone. Any aid from the foodbank would be an incentive to the staff.

Foodbank support is recommended.

**Contact:**

Mr. Andre Miranda (Assistant Head)

## PROJECT DATA SHEET No: 07

**Project Name:**

Women's Training Centre

**Location:**

Kikolo, Cacuaco Municipality

**Organization:**

UNITED EVANGELICAL CHURCHES OF ANGOLA (U.I.E.A.)

**Activity Sector:**

Women / Training

**Direct Participants:**

7 Staff

**Beneficiaries Affected:**

80 Students

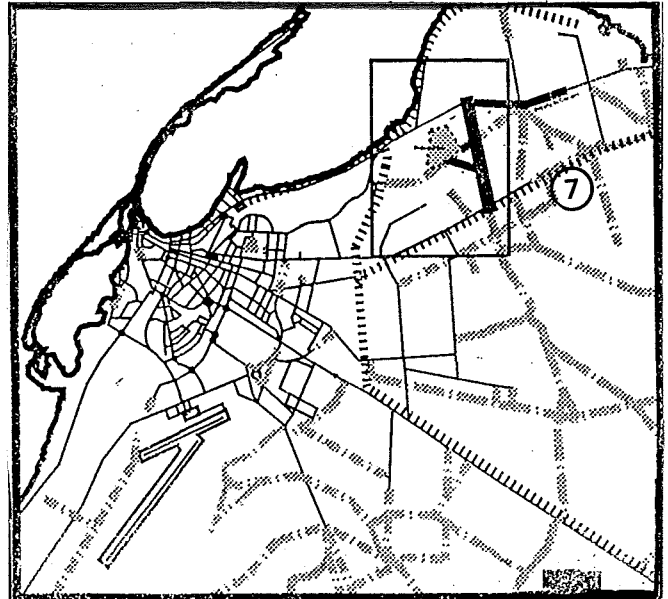
**Project Description:**

The U.I.E.A., is a member of the A.E.A. This training centre teaches sewing to women. The church has applied for help but has not as yet benefited from the foodbank aid. This project is financed by World Vision, who helped in the construction of the building, where the activities are held, as well as with equipment (9 sewing machines) and staff salaries.

The project's main aim is of offering professional training in sewing to rural and displaced women. The church also runs a health centre annexed to the project to guarantee basic health care for the staff and the women in training, as well as for the surrounding community.

The project coordinator, Mrs. Catoquesa, said that the latest course had initially started with 80 women, whose numbers had dropped to 40, then to 15 only having completed their full training.

Most women find it difficult to give time to studying in the face of the high cost of living, and are forced to do commerce to survive. Certain incentives might help to secure a better number of apprentices.



The finished products are selected then sold, and funds revert to the project.

The project is located in the Augusto Ngangula peri-urban bairro of the Kikolo district, and has a staff of 5 who also teach domestic sciences. The building is divided into a big classroom, a small storeroom for teaching aids, a kitchen and social room, a health centre, lavatories and general depot/storeroom.

**Conclusion:**

The project is working well and has basic human and material conditions as well as a moderately good impact on the community. It needs extra help with organization.

Aid from the foodbank would therefore create a good incentive to all those involved with the project.

Recommended for assistance from Foodbank.

**Contact:**

Mrs. Maria Helena Catoquesa (Coordinator)

## PROJECT DATA SHEET No: 08

**Project Name:**

Health Centre Construction

**Location:**

Bairro Caop, Viana Municipality

**Organization:**

EVANGELICAL BROTHERS CHURCH OF ANGOLA (I.E.I.A.)

**Activity Sector:**

Construction

**Direct Participants:**

10 Builders

**Beneficiaries Affected:**

27

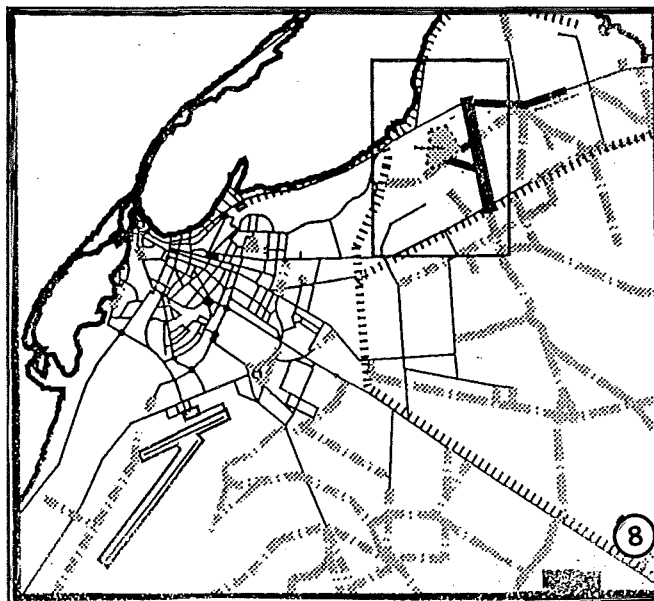
**Project Description:**

This project consists in building the church's future health centre. The project Director, Mr. Muanawuta, told us that this centre under construction will provide both basic and preventive community health care and will also be a main training centre for health-care workers that have already graduated.

The job started in June 1993 and foodbank aid was available from August. There are nine workers employed. Four depots/store rooms and the surrounding wall have been completed and they are now working on the main building of the health centre.

No finishing date has been set, as building materials are hard to come by.

The I.E.I.A. is a member of the A.E.A but has sent its requisition for aid directly to D.W. without first passing through the usual A.E.A. channels as others do.

**Conclusion:**

The construction project is proceeding normally, depending on availability of supplies. There have been several interruptions but the job plan has been slow.

Recommended for continued Foodbank assistance.

**Contact:**

Mr. Tito Mateus Muanawuta  
(Project director)

**PROJECT DATA SHEET No: 09**

**Project Name:**

Petroangol Health Centre

**Location:**

Bairro Hoje Ya Henda, Cazenga Municip.

**Organization:**

BAPTIST EVANGELICAL CHURCH OF ANGOLA (I.E.B.A.)

**Activity Sector:**

Primary Health

**Direct Participants:**

27 Staff

**Beneficiaries Affected:**

37,400 per year

**Project Description:**

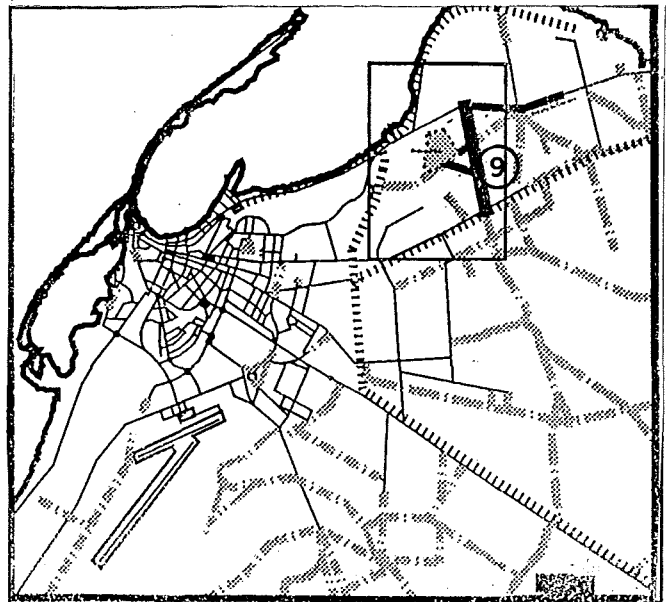
The I.E.B.A. has a public health and training project located in the Petrangol Zone, near the old "Cala Boca" market. Its objective is to offer care and assistance, preventive health care and a lab training programme.

The building has a big veranda used as a waiting room, and rooms for reception and registry of patients' files, first-aid, pharmacy, administration, eye treatment pre-natal and vaccination. The other lab building has rooms for reception and registry, lavatories, haematology and bacteriology, microbiology, analysis, sterilization, storage and administration.

The project is fully functional and sees about 50 new patients per day along with the regular ones. This project is established in the community and services a catchment area unseved by other health centres.

The level of organization, hygiene and general operation is good and acceptable.

This is a new beneficiary that applied for aid in March and has not as yet been included in the Foodbank programme.



The project is assisted through another Development Workshop institutional support project. Foodbank assistance will be complimentary to this existing programme.

**Conclusion:**

This project is functioning well and has good human and material basis. It has a significant impact on the local community. The only visible problem is the lack of security and the premises have been burgled several times, thus hampering the project to some extent.

This project is recommended for Foodbank support.

**Contact:**

Mr. Miguel Vinda  
(Coordinator and technician)

## PROJECT DATA SHEET No: 10

**Project Name:**

Adult Literacy Centre

**Location:**

Ngola Kiluange, Sambizanga Municipality

**Organization:**

ADMINISTRATION OF NGOLA KILUANJE  
COMUNA

**Activity Sector:**

Literacy

**Direct Participants:**

25 Staff

**Beneficiaries Affected:**

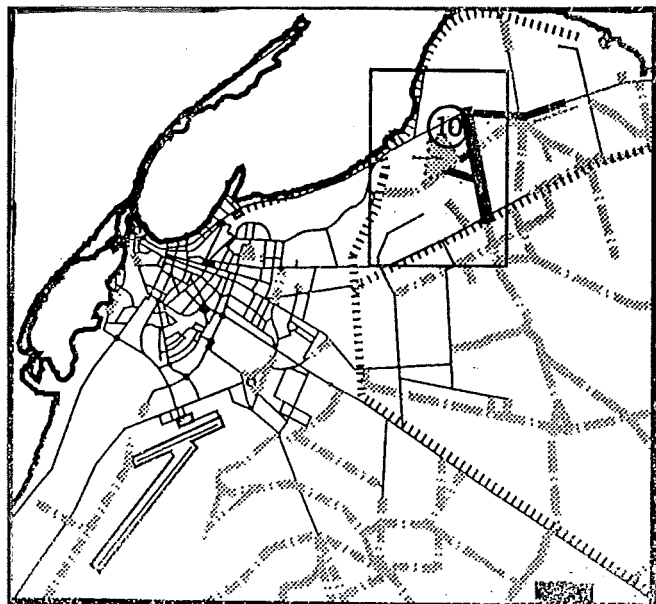
n/a

**Project Description:**

Despite an evaluation team visit to the centre visit to they were unable to verify the information provided to them on the project. The centre belongs to the local government of the area and is said to work from an office within the local administration. There are reported to be 25 teachers, of which 3 are also administrative staff, and the rest offer 2 hours per day of literacy classes to local companies employees. Local government pays all salaries.

The evaluation team was unable to get any information relating to the volume of work performed, results obtained or impact on the community. It was difficult to obtain any documentary data on the project, and on the staff. There were no staff nor students available to meet the evaluation team.

This centre gets no aid from the foodbank but has applied for it for their literacy teachers.

**Conclusion:**

Having been unable to obtain necessary information to evaluate the work done by the teachers, it was difficult to access its effectiveness.

The decision on assistance from the Foodbank should be deferred until a more detailed assessment can be undertaken.

**Contact:**

Mr. Simao Mateus Paulo  
(Head teacher)

**PROJECT DATA SHEET No: 11**

**Project Name:**

Health Promoters Training School

**Location:**

Viana Municipality

**Organization:**

EVANGELICAL BROTHERS CHURCH OF ANGOLA (I.E.I.A.)

**Activity Sector:**

Training / Primary Health

**Direct Participants:**

9 Staff

**Beneficiaries Affected:**

80 Students

**Project Description:**

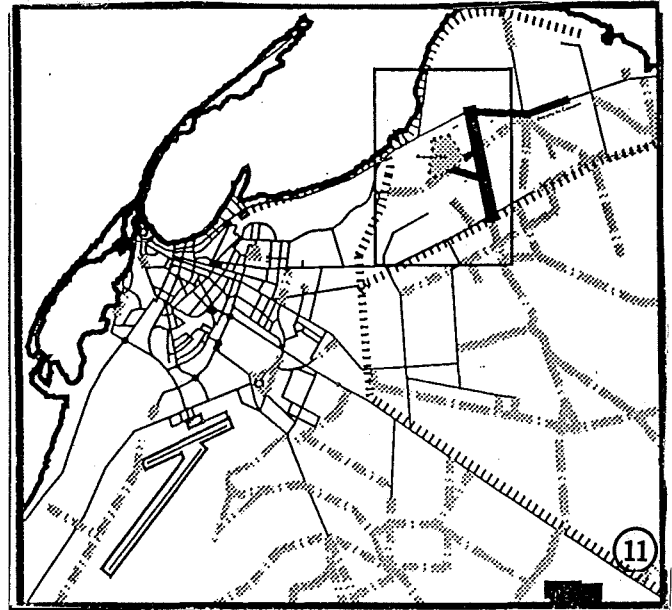
The I.E.I.A. is a member of the A.E.A. and has 2 projects benefiting from foodbank aid.

The first is a training school for health promoters. The installations are well built and are divided as follows: a big classroom, a teachers' room, 4 rooms with a total of 40 beds for the students to live-in, a supply room and 2 bathrooms, a store room, kitchen and small office.

The aim is to train health promoters. This project began in 1989 and food aid was offered in 1990.

The youth being trained here come from the provinces and live in the centre till completion of their course. Every year there are 2 courses lasting 4 months each and then a period of work experience in the state hospitals.

The trainees then return to their own provinces to work. These students must pay a part of the fees to finance the project. The staff of 8 is paid by the church: the director of the project, a secretary, 3 teachers, 1 cook and 2 guards.



The food aid goes mainly to help the workers and a part is set aside for the collective kitchen in the students' hostel.

It was noted that this project is well supported by the church members and had good links to the local community also.

**Conclusion:**

This project is functioning well and has good physical, material, and human resources available. The organization is good and the impact is significant for local churches in the Luanda and the provinces, whose members have already benefited from training in this project.

Recommend continued Foodbank support.

**Contact:**

Mr. Tito Mateus Muanawuta  
(Project Director)

**PROJECT DATA SHEET No: 12**

**Project Name:**

Golf Health Post

**Location:**

Bairro Golf, Kilamba Kiaxi Municipio

**Organization:**

CHRISTIAN SOLIDARITY AND MUTUAL  
AID (S.C.A.M.)

**Activity Sector:**

Primary Health

**Direct Participants:**

8 Staff

**Beneficiaries Affected:**

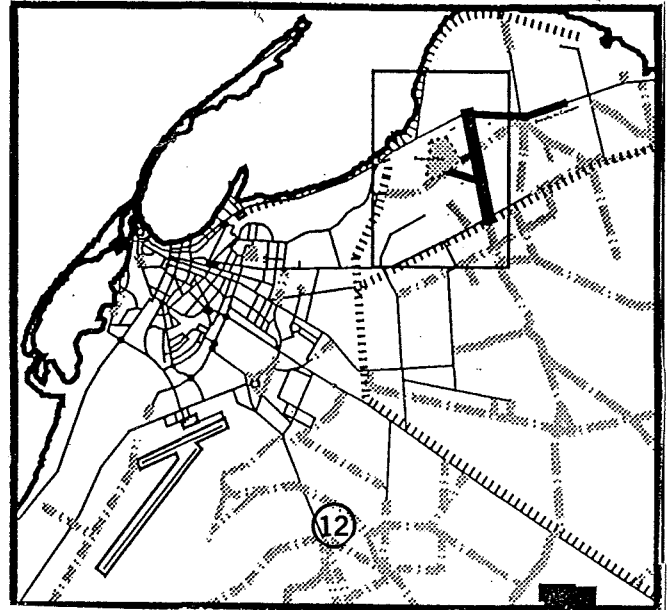
21,600 per year

**Project Description:**

This project is situated at the entrance of the Golf peri-urban bairro in a wooden house that is in a very bad condition. There is a reception and registration area for patients, a small consulting room, a treatment room, a small observation room where patients are often hospitalized, a mini lab-room and 2 outside lavatories for men and women.

Material conditions are poor. There is electricity but no running water, which has to be kept in drums. A tin-roof house in the yard is used as a waiting room. The poor physical conditions make the hygienic functioning of the centre a difficult problem. Despite these crowded conditions, the centre is very popular amongst patients in search of basic first aid and health care.

This project started at the beginning of 1993 and has a staff of 8 that includes nurses with basic training and 3 technicians. Staff absenteeism was noted as a problem by the evaluators. There is a registry book and files for the patients.



The executive secretary of the S.C.A.M. informed that a construction project is being planned with the benefit of aid from the French Embassy. This centre sees 30 to 60 patients per day and is opened morning and afternoons, and nights when necessary.

**Conclusion:**

This project functions reasonably efficiently despite its serious material problems. There are some indications that the project may receive assistance to upgrade itself. The project's impact on the community is limited by its close proximity to the government's health centre. The centre needs an urgent reconstruction of buildings, sufficient sanitary equipment and more staff.

Recommend provisional support from Foodbank for 6 months. Recommend project consider re-location.

**Contact:**

Mr. Metusala Samuel (Head of Centre)

**PROJECT DATA SHEET No: 13**

**Project Name:**

Palanca Health Post

**Location:**

Bairro Palanca, Kilamba Kiaxi Municipio

**Organization:**

CHRISTIAN SOLIDARITY AND MUTUAL  
AID (S.C.A.M.)

**Activity Sector:**

Primary Health

**Direct Participants:**

6 Staff

**Beneficiaries Affected:**

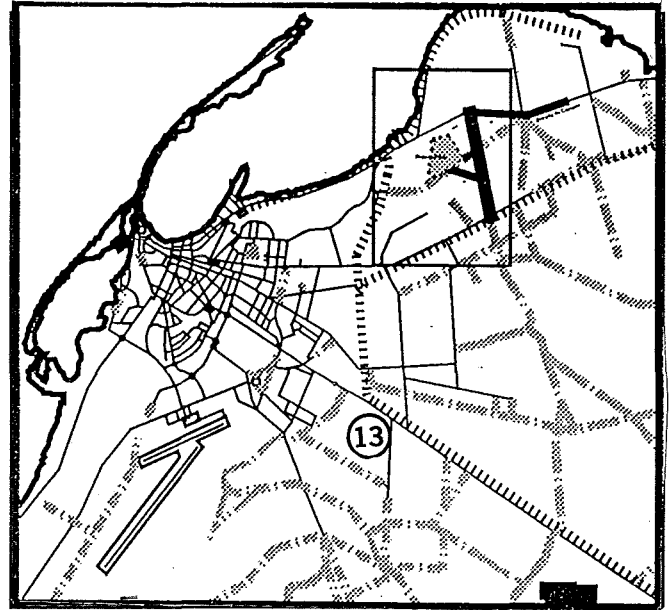
21,600

**Project Description:**

This emergency programme on basic health care is situated at the very end of Palanca peri-urban bairro. The building is a solid construction of good appearance, and is divided as follows: waiting room and files, infirmary and small pharmacy. There is electricity but water is kept in drum reserves. The lavatory has a tin roof and is only provisional. Patients have a registry book. The beds have no mattresses but only bamboo or grass mats at this stage.

The centre opened in July 1993, is relatively unknown and still has a small influx of patients. Working conditions, organization and hygiene are of an acceptable standard.

Ten to twenty patients are seen daily and a staff of 6 run the centre: 3 nurses and 3 technicians.



**Conclusion:**

This project started emergency work a few months ago and, as such, has not yet grown solid roots in the community. While the post is apparently functioning sufficiently the low patient flow indicates it has yet to have a significant impact in the local community. The centre has potential for future development. A preventative health programme has not yet been developed.

Provisional Foodbank assistance to the project is to be recommended followed by an assessment after 6 months.

**Contact:**

Mr. Diavanga Yavanga Edi (Head of centre)

**PROJECT DATA SHEET No: 14**

**Project Name:**

Golf II Health Post

**Location:**

Bairro Sapu, Kilamba Klaxe Municipio

**Organization:**

CHRISTIAN SOLIDARITY AND MUTUAL  
AID (S.C.A.M.)

**Activity Sector:**

Primary Health

**Direct Participants:**

7 Staff

**Beneficiaries Affected:**

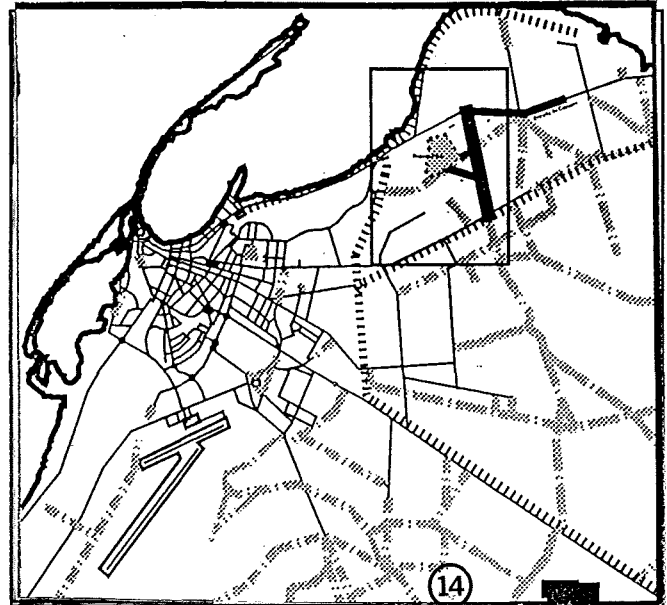
15,000 per year

**Project Description:**

This 3rd SCAM project on basic health care is located in the Sapu Zone, in a building of solid construction of good general appearance.

There is a reception and waiting area, a consulting room, first-aid room, infirmary with beds and no mattresses where mats are used provisionally, and a small lab. General organization and hygiene are normal but the centre has no electricity. A bathroom is still under construction and water is kept in a reserve tank. This project is recent and started in the last few months of 1993.

The staff of 7 includes technicians, auxiliaries, and administrative personnel.



**Conclusion:**

This project is new but functioning adequately with potential for development in the future. The centre needs a complete set of equipment and a source of medical supplies for the project to develop. It provides an important service to the local community.

Foodbank assistance should be made available to this project.

**Contact:**

Mr. Ntemo Manuel  
(Technician and head of centre)

**PROJECT DATA SHEET No: 15**

**Project Name:**

Community Health Kilamba Kiaxi

**Location:**

Bairro Palanca, Kilamba Kiaxi Municipio

**Organization:**

CHRISTIAN YOUTH ASSOCIATION

(A.C.J)

**Activity Sector:**

Primary Health

**Direct Participants:**

26 Staff

**Beneficiaries Affected:**

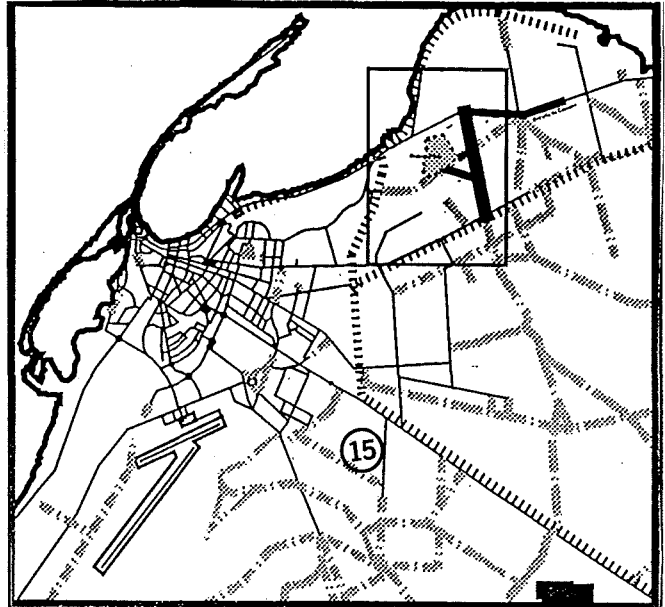
14,400 per year

**Project Description:**

The A.C.J.'s Health Centre is big and divided as follows: waiting room, reception and registry area, first-aid room, consulting room, infirmary for women with 5 beds and no mattresses, and one for men in the same state. There is also a pharmacy, lab, storeroom, inside bathroom, and 2 outside ones at the back. The centre has electricity, a tank for reserve water, and a PAV room with a fridge for storing vaccines. According to the established calendar, the vaccination programme should start in January 1994 and six A.C.J. technicians are doing a special course in government centres to this effect. The project administration office and the programme preparation and training of health personnel are run from 2 houses.

A course for 30 vaccination technicians was held with the knowledge of the national PAV authorities and of the UNICEF, and supervised by the Luanda provincial health delegation. They also hold courses to train health technicians to help in various P.S.C. or community health projects.

The project is run in a big building in good condition, but lacks material and supplies for a better functioning of all medical and preventive assistance. The centre is open 24 hours a day, operating with 3 shifts.



This project benefits from foodbank aid that has acted as an incentive to the staff in these difficult times. A total of 22 nurses, auxiliaries, general services staff and the project's doctor, as well as 4 of the Association's directors all benefit.

The project has an impact on the respective community and has become well-known through 2 pilot-projects (door-to-door education and malaria control) that tested many families, as well as offering permanent services in basic health care on a daily basis.

**Conclusion:**

This project is functioning well given its limited material resources. It has a significant impact on its' community. As this project is very ambitious and diversified (prevention, curing and training) it needs further material aid in order to meet its larger goals. The project has potential for future development. Continued support from the Foodbank is recommended.

**Contact:**

Mr. Costa Kiamuangana Nkongolo  
(Head of health centre)

## PROJECT DATA SHEET No: 16

**Project Name:**

Ngola Kiluanje Health Centre

**Location:**

Ngola Kiluanje, Sambizanga Municipio

**Organization:**

SAMBIZANGA MUNICIPAL DELEGATION  
OF HEALTH (MINSA)

**Activity Sector:**

Primary Health

**Direct Participants:**

59 Staff

**Beneficiaries Affected:**

25,200 per year

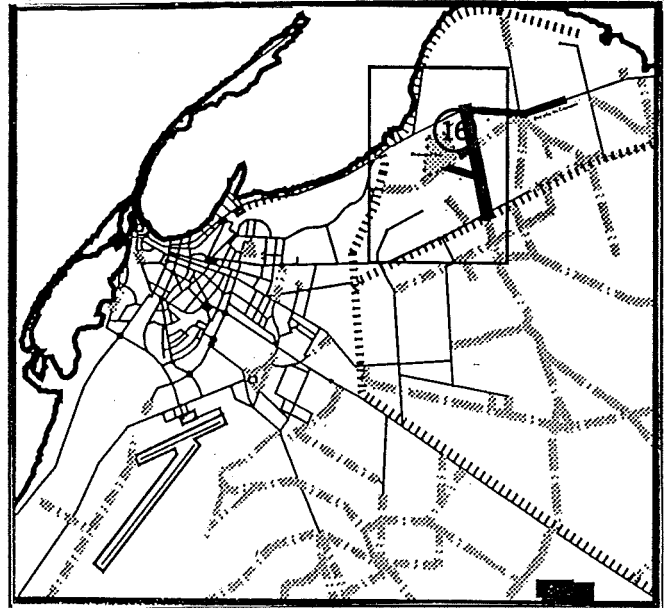
**Project Description:**

This local Comuna level health centre is located in the Ngola Kiluanje bairro and covers 4 districts, two of which have health posts which refer patients to the Health centre. The building is divided into a reception and registry area, administration room, first-aid room, 2 bathrooms (one unused), a kitchen (unused for lack of food), a family-planning room, pharmacy, store-room for medicines, depot, PAV room, child-care room and doctor's consultation room.

There are 57 regular workers with a doctor, technician, nurses, auxiliaries and general services staff. The centre is open from 7:30 a.m to 13:00 hours.

General emergencies services are open all afternoon till 17:30 hrs. with a staff of 3 nurses. At night, guards patrol the centre.

There are a great number of patients, up to 300 per day. The biggest problem seems to be the lack of medicines that are usually offered as part of the treatment. If unavailable in the centre's pharmacy (a recurring problem) patients are asked to buy drugs in the market.



The centre has been working for many years and has a great impact and definite roots in the community. It has benefited from foodbank aid for several years, and this has been most useful, especially at this time of high inflation.

**Conclusion:**

This centre is working well and has certain material guarantees despite insufficient medical supplies. The increasing number of patients have created considerable work load for the nursing staff at this centre. This health centre has a positive impact on the community and this will only increase if all material conditions are guaranteed. Following current government policy guidelines all services and drug supplied by the centre are free.

Continued Foodbank support for this project is recommended.

**Contact:**

Dr. Isabel (Health centre's doctor)

## PROJECT DATA SHEET No: 17

**Project Name:**

Public Health Post

**Location:**

Mabor Bairro, Cazenga Municipality

**Organization:**

CHRISTIAN SOCIAL UNION FOR  
COMMUNITY DEVELOPMENT (USODEC)

**Activity Sector:**

Primary

**Direct Participants:**

15 Staff

**Beneficiaries Affected:**

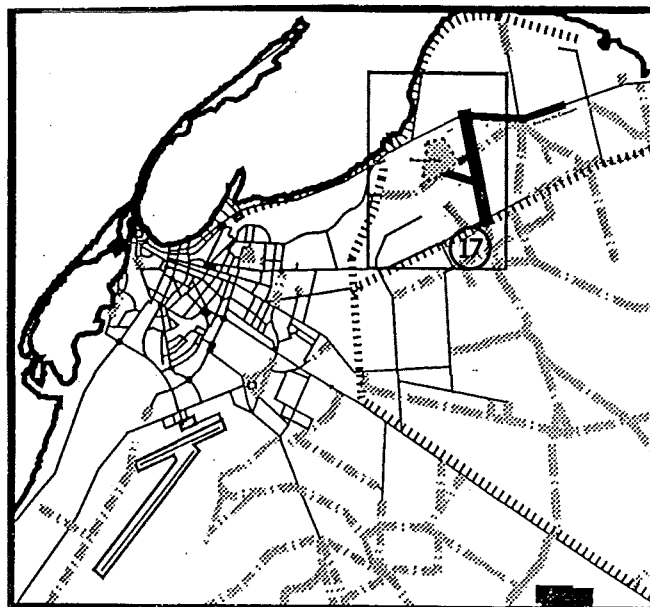
10,800

**Project Description:**

U.S.O.D.E.C. has its health project in the Mabor bairro. It is run from a building of solid construction, divided as follows: doctors' consulting room, small lab., 3 infirmary rooms for men, women and children respectively with a few beds, as well as a small pharmacy.

The staff consists of 2 technicians, 4 nurses, 3 health promoters, and 2 doctors who collaborate with the centre. There are also 4 administrative support staff.

The centre serves the immediate neighbourhood. Staff is paid on a monthly basis by the organization and also benefits from foodbank aid that is greatly appreciated.

**Conclusion:**

This project functions well, within the material and human resources available. The centre needs further material and training aid so as to develop fully.

The project is recommended for continued Foodbank support.

**Contact:**

Mr. Mayamona Makiadi (Director of centre)

**PROJECT DATA SHEET No: 18**

**Project Name:**

Training Centre - Mabor

**Location:**

Bairro Mabor, Cazenga Municipality

**Organization:**

CHRISTIAN SOCIAL UNION FOR  
COMMUNITY DEVELOPMENT (USODEC)

**Activity Sector:**

Training

**Direct Participants:**

15 Staff

**Beneficiaries Affected:**

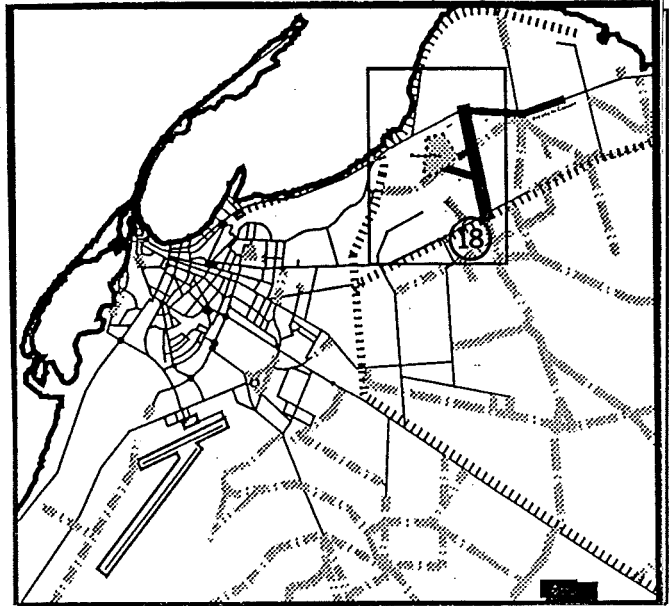
650 Students

**Project Description:**

U.S.O.D.E.C. is a national N.G.O that has 2 projects in the Mabor peri-urban bairro of Luanda, both benefiting from foodbank aid. These projects are for teaching and training, and public health. The aid goes to help all the project staff, as well as 4 people in the U.S.O.D.E.C. administration who coordinate, aid and supervise the projects.

The teaching and training project is housed in 2 buildings with adequate school equipment. The school is open mornings and afternoons and caters to primary school levels. The school has a total of 600 students and 14 teachers including one that does administrative work. It opened its doors on November 20th 1990 and all teachers are paid on a monthly basis.

Classroom space is crowded for the large number of students enrolled in the programme. The project benefits from foodbank aid and the teachers find this supplement to their salaries most useful in times of high inflation and reduced buying power.



**Conclusion:**

This project is running well. The physical structures are good and human and material resources are available. There are many students still on the waiting lists. The project has a great impact on the community. If more material aid is received, the school leaders will be able to expand the building and further their numerous plans and initiatives.

Continued Foodbank support for this project is recommended.

**Contract:**

Mr. Capitão Filho Vango (Director of school)

## PROJECT DATA SHEET No: 19

**Project Name:**

Rocha Pinto Health Centre

**Location:**

Bairro Rocha Pinto, Maianga Municipality

**Organization:**

EVANGELICAL REFORM CHURCH OF ANGOLA (I.E.R.A)

**Activity Sector:**

Primary Health

**Direct Participants:**

19 Staff

**Beneficiaries Affected:**

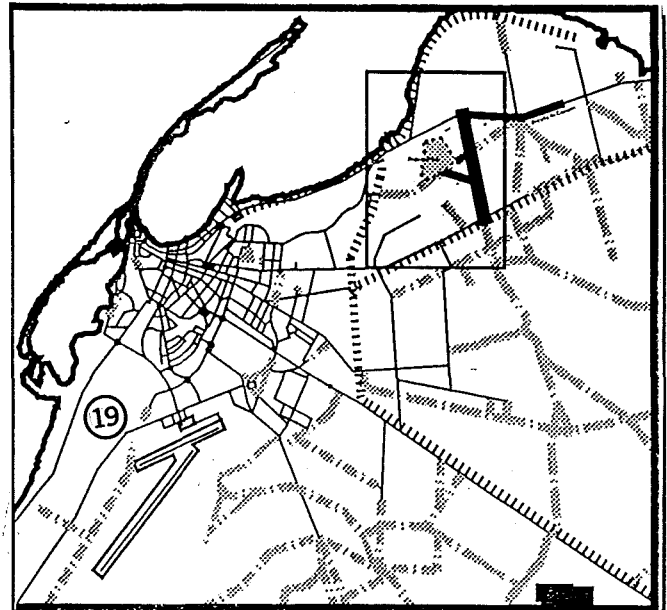
19,800 per year

**Project Description:**

The I.E.R.A. health care centre project is found in the Rocha Pinto peri-urban bairro and benefits from foodbank aid. There are 2 buildings involved, one new and in good condition and the other, very run down that will be demolished in 1994 to make way for new construction. Basic material conditions are good. The buildings are divided into reception and registry area, consulting and paediatrics room, G.P. room, pharmacy, first-aid room, medical storeroom, PAV and pre-natal room, lab, kitchen and 2 lavatories. There is electricity and a water reserve tank.

The staff of 17 include the administrator, nurses, lab technicians, pharmacy and auxiliary personnel. The centre is open from 8:00 a.m to 3:00 p.m and sees about 40 new cases per day along with the others. The Project is associated with the Christian Medical Commission of the Angolan Council of Churches.

The Centre runs effective programmes of preventative health.



This project works well and has an impact on the community. Its basic hygienic conditions are acceptable. Workers benefiting from foodbank aid admit that it has been very useful and a great incentive for staff.

**Conclusion:**

This project works well and has all the basic material and staffing requirements for an effective programme. One building is in good shape, the other needs repairs. This project offers good services and has been running for several years, and so it has a considerable impact on the religious community as well as on the general population of this zone. Foodbank aid constitutes an important incentive for the workers.

Continued Foodbank assistance is recommended.

**Contact:**

Mr. Mpembela Oliveira (Project Administrator)

**PROJECT DATA SHEET No: 20**

**Project Name:**

Val Soroco Health Post

**Location:**

Ngola Kiluange, Sambizanga Municipality

**Organization:**

EVANGELICAL CHURCH OF ANGOLA  
(I.E.A.)

**Activity Sector:**

Community Health

**Direct Participants:**

12 Staff

**Beneficiaries Affected:**

5,400 per year

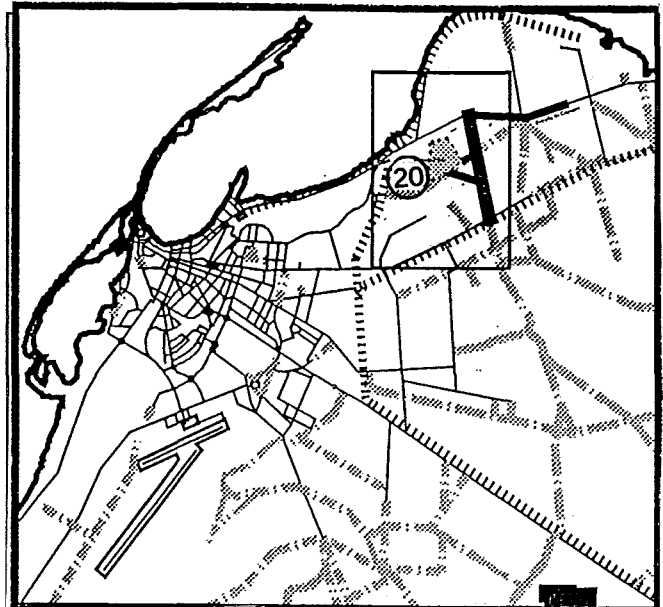
**Project Description:**

This church has a health project in the peri-urban bairro of Val Soroco. It started working on November 14th 1993. The physical structure of the new building looks neat, and it is divided as follows: reception and files, paediatrics consulting room, G.P.'s consulting room, mini-lab, mini-pharmacy, first-aid room and a future PAV room.

The staff of 5 includes technicians, auxiliaries and head of administration, and all are paid for their work. Patients have a registry book and organization and general hygiene are acceptable.

The centre has electricity, a water reserve tank and 3 outside lavatories. The number of patients attended to is still low in view of the short time the centre has been operating. Medicines are sold at reasonable prices to the patients to help with the centre's budget.

This project has benefited from foodbank aid from the construction phase. Food aid is also extended to administrative staff of the project.



**Conclusion:**

The project started functioning a very short while ago, but is running well. With time its influence will be greater.

The I.E.A. project participates as a partner within the Sambizanga Project and coordinates public health initiatives with the Provincial Delegation of Health.

Continued support is recommended from the Foodbank.

**Contact:**

Mrs. Ana Paula de Jesus (Head nurse)

## PROJECT DATA SHEET No: 21

**Project Name:**

Sambizanga Community Development

**Location:**

Ngola Kiluange, Sambizanga Municipality

**Organization:**

FRIENDS OF THE ENVIRONMENT NGOLA  
KILUANGE / DEVELOPMENT WORKSHOP

**Activity Sector:**

Water, Sanitation, Community Development

**Direct Participants:**

87

**Beneficiaries Affected:**

120,000

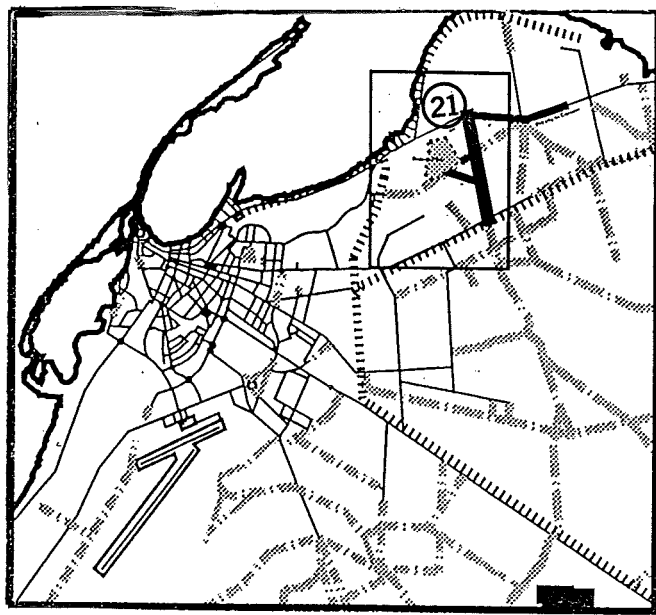
**Project Description:**

Project Sambizanga was developed in partnership with a number of bairro based organizations in the Ngola Kiluanje commune in the Sambizanga municipality and is supported by Development Workshop. It is a community development project covering health, water and sanitation.

There are 69 activists on the job plus a nurse and 2 logisticians. Of the total staff, 28 are women.

Eleven workers are employed full-time on the project and receive a monthly salary and foodbank aid. The other activists dedicate 2 or 3 days a week or a week-end to the project. 15 water monitors take care of maintenance of standposts constructed by the project.

Activists are trained in water and sanitation primary health care, diarrhoea related sicknesses, and sanitary education and also learn basic PAV guidelines or procedures. The various jobs related to the project consist in house-to-house visits to do hygiene education and to teach drinking water treatment. Referrals are made to the



health centre vaccination unit. When basic sicknesses of the family members is detected the worst cases are sent to the health centre for treatment.

The activists hold daily meetings at the Ngola Kiluange health centre and in local schools and firms to teach health education. Many activists belong to the Ngola Kiluange Association of Friends of the Environment and plant fruit and shade trees. They also have general cleaning up campaigns in the neighbourhood. In 1993 they held 10 such campaigns and helped put up latrines and other buildings. The project started in 1989 and activists work half-days only.

**Conclusion:**

This project functions well. Human, material and organizational conditions are guaranteed. The project has a significant impact on the community and is growing strong roots.

**Contact:**

Mrs. Maria Orquidea Saraiva  
(Field Coordinator)

PROJECT DATA SHEET No: 22

**Project Name:**

Community Training Workshop

**Location:**

Cacuaco Municipality

**Organization:**

DEVELOPMENT WORKSHOP  
(D.W.)

**Activity Sector:**

Water & Sanitation, Training

**Direct Participants:**

30

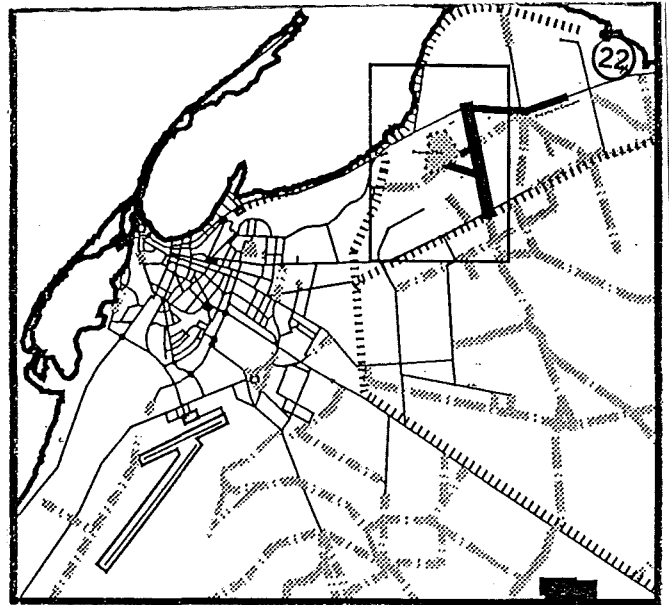
**Beneficiaries Affected:**

20,000

**Project Description:**

This project has been developed by D.W. and is located in Cacuaco at the periphery of Luanda. It serves as a training centre and programme support unit for material aid to other activities and work of the organization, such as production of cement blocks and slabs for latrines, carpentry, metal-work, construction services, mechanics and assembly of water standpipes. The workshop runs regular training courses for community groups and local NGOs on water supply, sanitation and community health.

A staff of 26 workers and 4 support staff are paid a monthly salary, and include 3 technicians, 4 apprentices, and 19 general service workers. A kitchen offers daily meals and workers also receive monthly food rations to take home. The head of the workshop says that working standards are high and the staff is very responsible. The logistician is directly involved in managing food distribution to the workers and to the kitchen. The head of the workshop sees to the overall running of the operation.



**Conclusion:**

This project functions well, and human, material and organizational conditions are met. It aids various other projects of DW and other NGOs and local government organizations. This project is very useful in terms of offering training and replicating lessons learned in DW's pilot projects. It also provides facilities for developing new technical solutions and innovation.

**Contact:**

Mr. Sadi Gabriel (Workshop Manager)

**PROJECT DATA SHEET No: 23**

**Project Name:**

Samba Health Post

**Location:**

Municipality of Samba

**Organization:**

PROPHETIC CHURCH OF THE HOLY  
GHOST OF ANGOLA (I.E.S.P.A.)

**Activity Sector:**

Primary Health

**Direct Participants:**

3 Staff

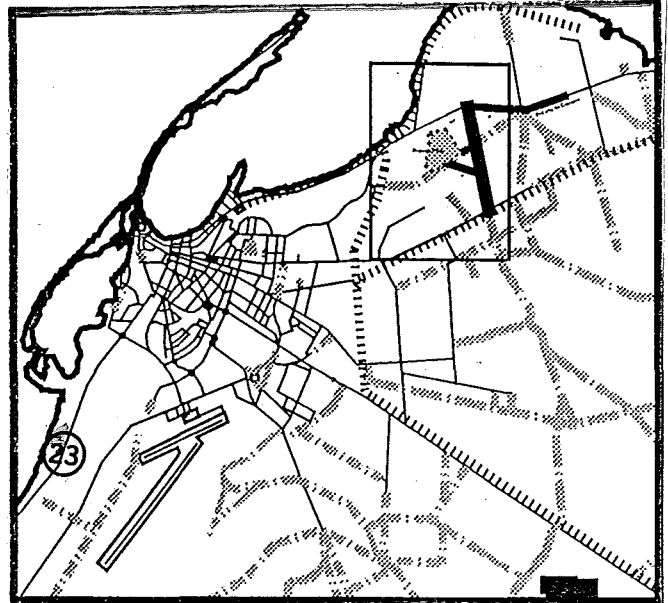
**Beneficiaries Affected:**

100

**Project Description:**

This project functions alongside the church, in a very small house with a tiny room for 3 beds, and another used for medical consultations, treatment and pharmacy etc. A staff of 3, includes the nurse, the leader and founder of their church Mr. Garcia and his wife.

There is no patients' registry book, and a noted lack of hygiene.



**Conclusion:**

This project lacks the basic conditions and infrastructural support necessary for operation of an effective health post.

Support for this project is not recommended at the present time. The project should be monitored for indications of significant improvements in function.

**Contact:**

Mrs. Lukela Makiese Maria (Nurse)

**PROJECT DATA SHEET No: 24**

**Project Name:**

Children's Centre

**Location:**

Bairro Vila da Mata, Cazenga Municipio

**Organization:**

TRINDADE

**Activity Sector:**

Training

**Direct Participants:**

21 Staff

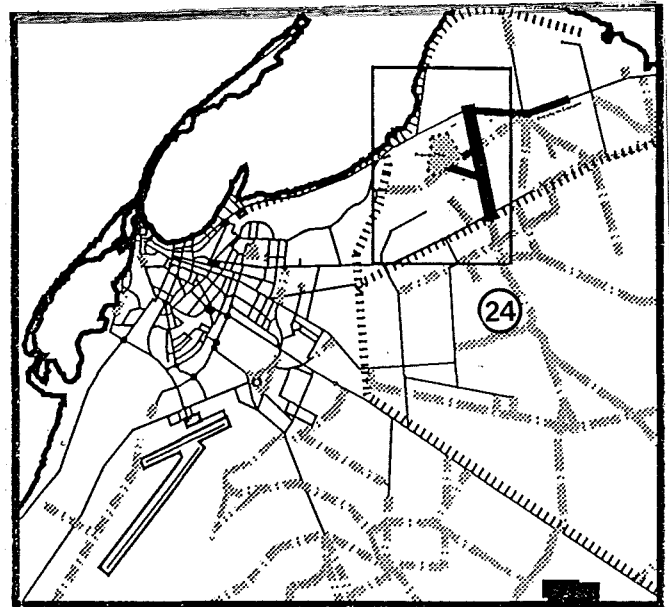
**Beneficiaries Affected:**

n/a

**Project Description:**

The evaluation team visited the offices of the organization but found that the head of this project was absent and no one could inform us as to the whereabouts of the centre.

The evaluators were thus unable to check on the existence or running of this project.



**Conclusion:**

Foodbank support for this project can not be recommended at the present time.

**Contact:**

Benjamin Valerie

## PROJECT DATA SHEET No: 25

**Project Name:**

Nutrition Recuperation Centre

**Location:**

Kikolo Bairro, Cacuaco Municipality

**Organization:**

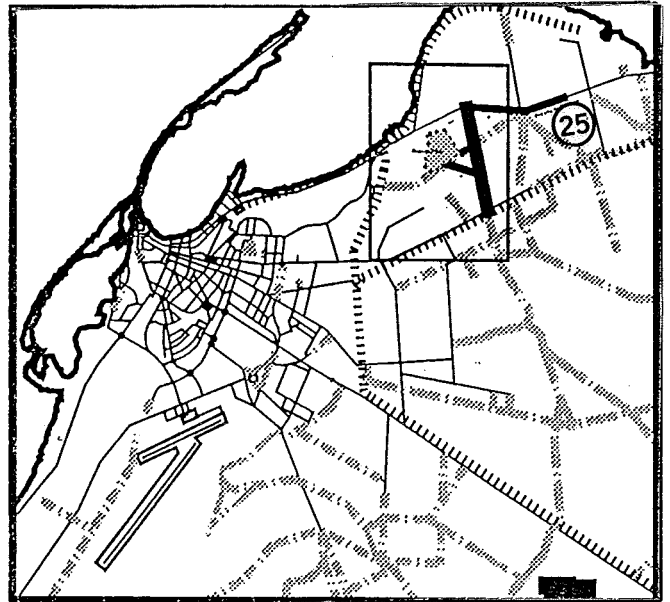
ANGOLAN RED CROSS  
(C.V.A.)

**Activity Sector:**

Training

**Direct Participants:****Beneficiaries Affected:****Project Description:**

The evaluation team visited the nutritional recuperation centre run by the Angolan Red Cross in the peri-urban bairro of Kikolo. The centre is functioning and they met both staff and many mothers and their undernourished children. The director told the team that they had not yet submitted a request for foodbank aid despite their great need for it. The C.V.A. is presently planning to set up another nutrition centre.

**Conclusions:**

This project functions well according to existing material conditions. As a social aid project for needy children, this undertaking is effective and worthy of replication.

If this project should request assistance from the Foodbank, acceptance of the proposal is recommended.

**Contact:**

Ms. Alda (Coordinator)

**PROJECT DATA SHEET No: 26**

**Project Name:**

Rocha Pinto Medical Post

**Location:**

Rocha Pinto Bairro, Maianga Municipio

**Organization:**

HUMANITARIAN PROGRAMME FOR ORPHANED CHILDREN (P.H.C.O.)

**Activity Sector:**

Primary Health

**Direct Participants:**

8 Staff

**Beneficiaries Affected:**

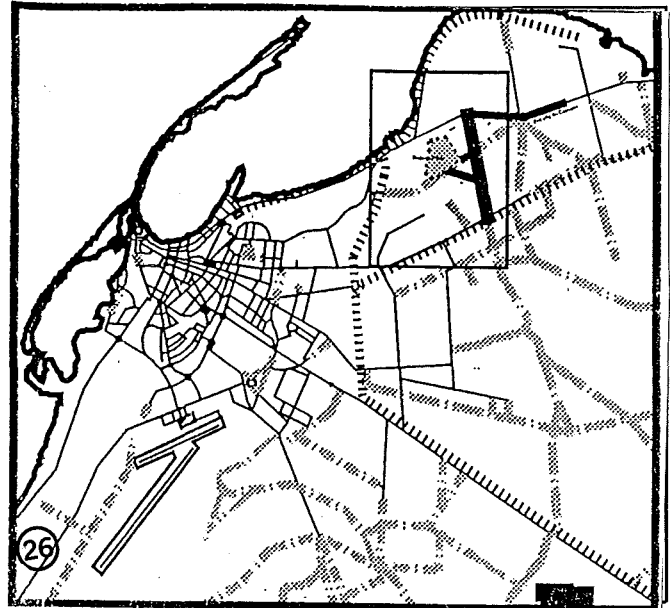
n/a

**Project Description:**

The P.H.C.O. have a medical post in the Rocha Pinto area. The project is run from a small house divided as follows: reception area, small consulting room, pharmacy and lab, and treatment room. There is no electricity and water is kept in plastic containers. The lavatory is in a very bad state.

Conditions of hygiene and organization are insufficient to offer proper sanitary services.

This centre has been working since 1989 and has a staff of seven. The project appears to have made only limited progress since its inception five years ago.



**Conclusion:**

Physical and material infrastructure and level of hygiene is poor. Management and logistics support for the project appear to be weak.

Foodbank support for this project is not recommended at the present time until some of the other basic problems of the centre are resolved.

**Contact:**

Mr. Nzinga Afonso (General secretary)

**PROJECT DATA SHEET No: 27**

**Project Name:**

Rocha Pinto Primary School

**Location:**

Rocha Pinto Bairro, Maianga Municipio

**Organization:**

HUMANITARIAN PROGRAMME FOR ORPHANED CHILDREN (P.H.C.O.)

**Activity Sector:**

Education

**Direct Participants:**

2 Staff

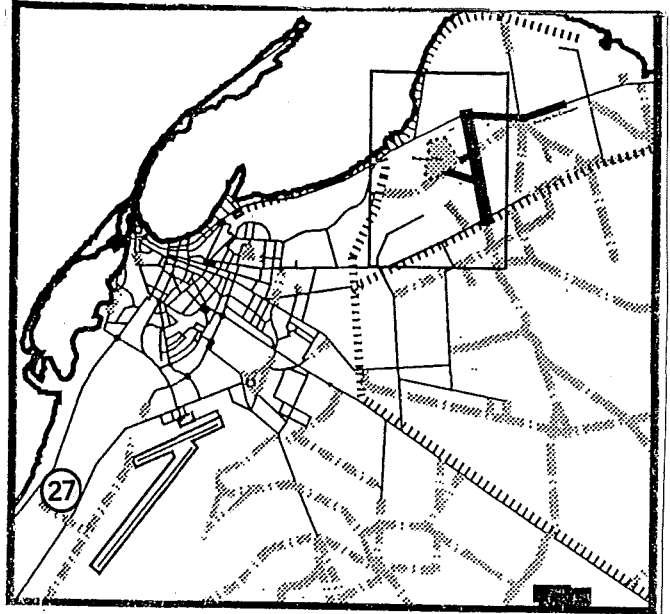
**Beneficiaries Affected:**

n/a

**Project Description:**

The evaluation team visited an unfinished room with 2 long benches and a blackboard in a yard. We found no teachers and no students there.

The P.H.C.O leaders informed us that the classroom is used for primary school teaching, and has 2 teachers. This project started in 1989 but can't find suitable aid to help develop it. The team found no visible signs that this project is functioning. There were no material nor structural conditions to support the project in evidence.



**Conclusions:**

Support from the Foodbank is not recommended at this time since it is apparent that other necessary inputs are not available.

**Contact:**

Mr. Nzinga Afonso (General secretary)

**PROJECT DATA SHEET No: 28**

**Project Name:**

Mabor Medical Post

**Location:**

Mabor Bairro, Cazenga Municipality

**Organization:**

CHRISTIAN YOUTH ASSOCIATION  
(A.C.M. - Y.M.C.A/Y.W.C.A.)

**Activity Sector:**

Primary Health

**Direct Participants:**

4 Staff

**Beneficiaries Affected:**

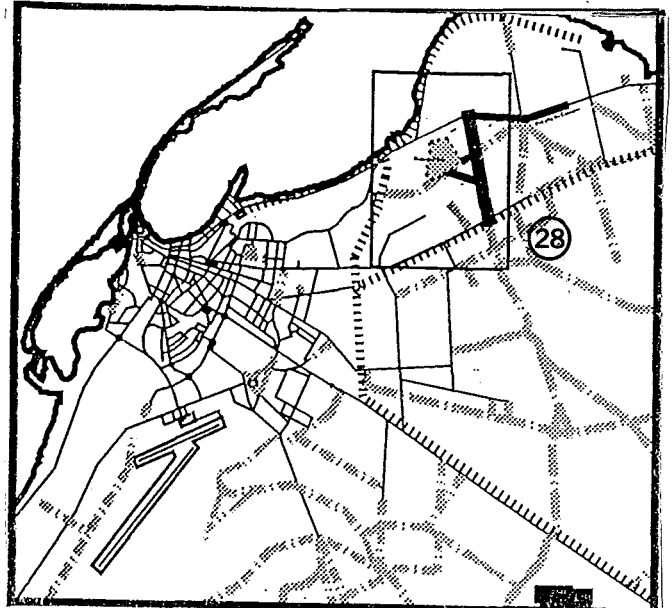
312 per year

**Project Description:**

This project is located in the Mabor peri-urban bairro and functions in a building equipped with basic conditions.

The project reopened in September 1993 after being closed for 3 months. The centre is still relatively unknown and still has few patients. Till the beginning of 1994 only 15 had been registered in the books. A staff of 4 includes 2 nurses and administrative personnel.

The project started in November 1992 and has been getting food assistance from the present project for several months.



**Conclusion:**

This small project re-opened a short while ago, and needs better material, human and organizational conditions to make a real impact on the community.

Provisional support from the Foodbank should be given for six months and then be reassessed for indications of improvements in the level of use and impact on the local community.

**Contact:**

Mrs. Maria Cumeso (Head of centre)

**PROJECT DATA SHEET No: 29**

**Project Name:**

ACM Women's Training Centre

**Location:**

Ingombotas Municipality

**Organization:**

CHRISTIAN YOUTH ASSOCIATION

A.C.M. - Y.W.C.A.

**Activity Sector:**

Women, Training

**Direct Participants:**

10 Staff

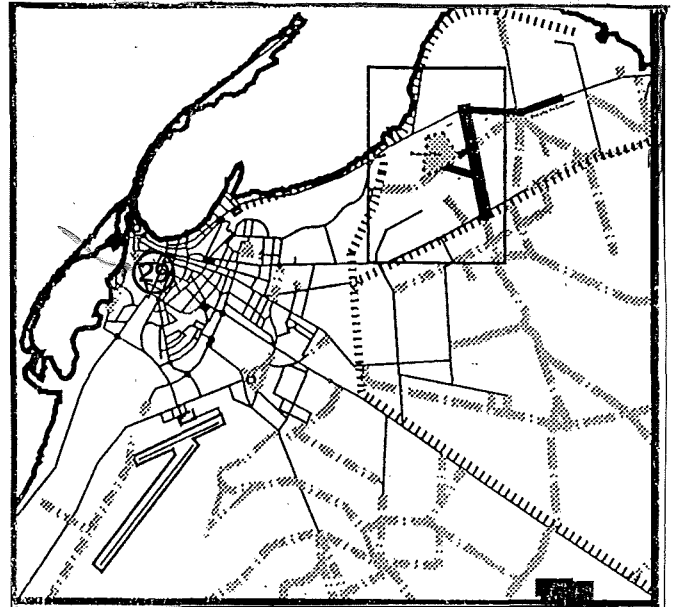
**Beneficiaries Affected:**

329 Students

**Project Description:**

This project is situated in the bairro of Ingombotas, in the centre of Luanda. The centre consists of one room with a sewing machine where 2 monitors teach the student-apprentices during morning and afternoon classes. The last group graduated in June 1993 and the centre only re-opened in November 1993.

One monitor confirmed that they receive foodbank products regularly.



**Conclusion:**

The evaluation team found no real indications that this project was working and they questioned the accuracy of the information received during their visit. This project needs better human, material and organizational conditions to function properly.

Further support should be conditional on improving the operation of the programme. The project should be reassessed after six months.

**Contact:**

Mrs. Teresa Domingos (Head of the centre)

## PROJECT DATA SHEET No: 30

**Project Name:**

Palanca Social Centre

**Location:**

Bairro Palanca, Kilamba Kiaxi Municipality

**Organization:**

CHRISTIAN YOUTH ASSOCIATION

A.C.M. (Y.M.C.A.)

**Activity Sector:**

Education

**Direct Participants:**

11

**Beneficiaries Affected:**

310 Students

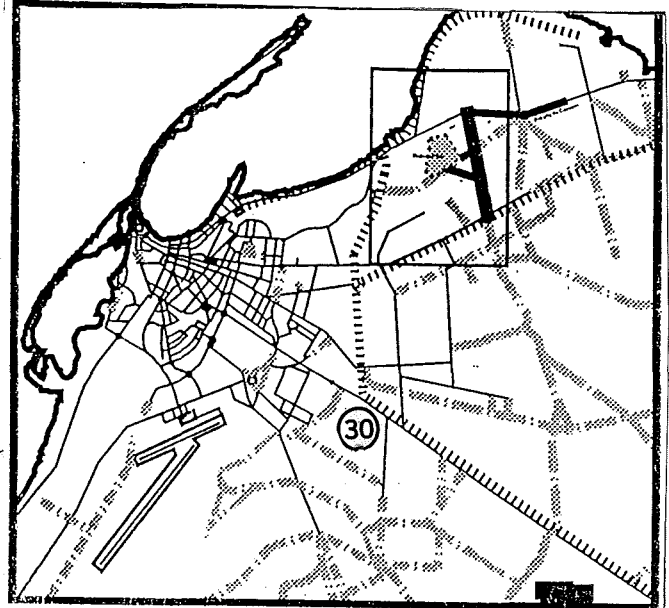
**Project Description:**

This project is located in a building of good condition in the Palanca peri-urban bairro, and is divided as follows: 3 classrooms equipped with desks, one office for administration and one small typing room.

The centre is open from 7:20 a.m till 5:00 p.m, and caters to students from kindergarten to grade 6.

There is a staff of 8, including the centre's director and the teachers and all are paid salaries. The typing course caters to 18 students taught by a monitor, every afternoon. The typing room is equipped with 4 typewriters. On their visit the evaluation team found neither monitor, nor students and the director was unable to explain their absence.

The staff have not yet received any food aid, but only information that they might soon get it.

**Conclusion:**

The primary school is working well as we confirmed on our visit. All basic conditions (material, human, organizational) and infra-structures exist for a normal running of the school. The evaluation team was unable to verify information they were given on the functioning of the typing course.

It is recommended that the Foodbank supports this project for an initial period of six months, to be reassessed at that time for future support.

**Contact:**

Mr. Joao Pedro Matubakana (Director of centre)

## PROJECT DATA SHEET No: 31

**Project Name:**

George Williams Training Centre

**Location:**

Bairro Petroangol, Cazenga Municipality

**Organization:**

CHRISTIAN YOUTH ASSOCIATION

A.C.M. (Y.M.C.A.)

**Activity Sector:**

Education & Training

**Direct Participants:**

16 Staff, 20 Builders

**Beneficiaries Affected:**

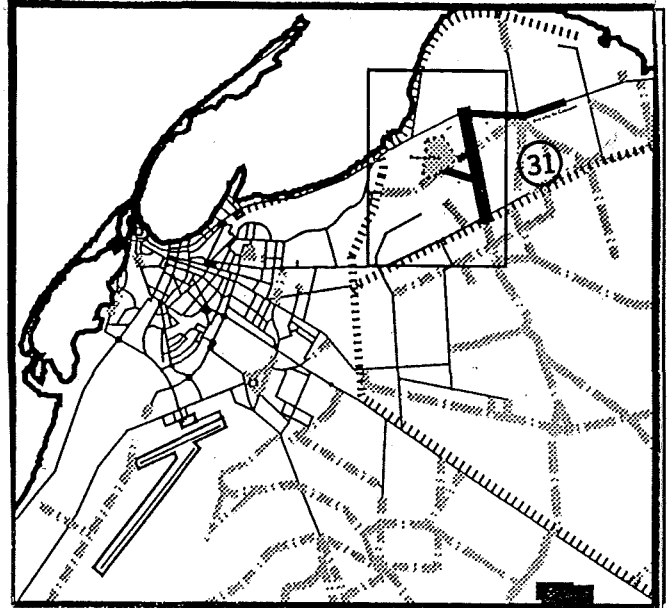
40 Students

**Project Description:**

This training centre is located in the peri-urban bairro of Pertrangol. The building has 2 classrooms, an administration office and a veranda.

The director of the centre informed the evaluation team that they hold classes for students from kindergarten to grade four. Children were found in both classrooms along with respective teachers. A staff of 10 include the director himself, a secretary and teachers.

Mr. Dinzeye said they also hold 3 English language classes and a management course for 10 students learning Accounts, Civil Law, Portuguese, English, History, Commerce and Administration, all taught by 4 teachers. He also stated that there is a typing course for 20 students held in the same centre. The 6 typewriters are out of order. Apparently the centre also caters to a cutting and sewing class for young girls. The evaluation team found 8 sewing machines and a teacher with only 4 of the 11 students. This centre is open from 8:00 a.m to 5:00p.m.



The evaluation team was concerned at the lack of space for so many planned activities, even considering the centres busy time-table. The evaluation team noted the physical expansion project already underway in the yard behind the centre. 14 workers were working on the extension project and are also receiving food for work.

**Conclusion:**

The evaluation team found primary-school children (grade 1) studying in the 2 classrooms. This part functioned well. They had concerns about the lack of space presently to accommodate all of the centre's existing activities. They suggest that this problem will be partially resolved by the extension of the centre which is presently underway.

This project is recommended for continuing Foodbank assistance.

**Contact:**

Mr. Joao Dinzeye (coordinator)

**PROJECT DATA SHEET No: 32**

**Project Name:**

FONGA Institutional Support

**Location:**

Ingombotas Municipality

**Organization:**

ANGOLAN FORUM OF NON-GOVERNMENTAL ORGANIZATIONS

**Activity Sector:**

Institutional Support

**Direct Participants:**

13 Staff

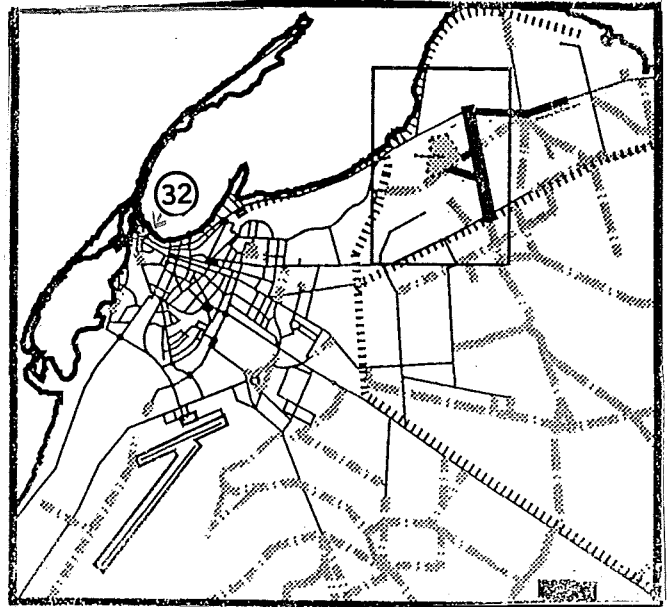
**Beneficiaries Affected:**

Members of NGOs affiliated

**Project Description:**

FOGA is a federation including most of the Angolan N.G.O.'s. There is a staff of 5 who run this organization: the coordinator, technical assistant for training, one for health, and one for general services.

They receive assistance from the Food Bank Project as a subsidy for their institutional support to other national NGOs who benefit indirectly from this assistance.



**Conclusion:**

The evaluation team reported no problems with the institutional support programme with FONGA. The food-aid goes to help the executive staff and collaborators.

Continued Foodbank support is recommended for this project.

**Contact:**

Mr. Francisco Tunga Alberto (Coordinador)

**PROJECT DATA SHEET No: 33**

**Project Name:**

Community Works Brigade

**Location:**

Ngola Kiluange, Sambizanga Municipality

**Organization:**

DISPLACED WORKERS BRIGADE

Kwanza Market

**Activity Sector:**

Public Works

**Direct Participants:**

50 Workers

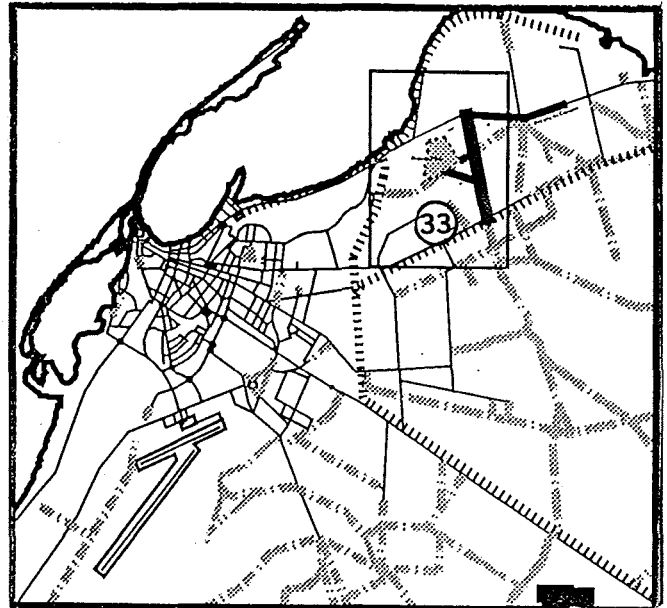
**Beneficiaries Affected:**

400

**Project Description:**

Displaced workers from northern Angola, presently settled near Kwanza Market in the Ngola Kiluange bairro have grouped together to offer their labour for various civil works projects in the Ngola Kiluange area.

Workers are organized on projects of roadway upgrading, rubbish removal, landscaping and the drainage of stagnant water. Workers are paid by food for work based on their hourly contribution of time on these "mini" projects. DW has also provided the brigade with tools and equipment.



**Conclusion:**

The results of the civil works projects are positive. The programme allows displaced workers to earn sufficient food to support their families and at the same time makes improvements in the physical environment of the bairro.

Continued support from the Foodbank is recommended for this project.

**Contact:**

Carolina Senga (coordinator)

**PROJECT DATA SHEET No: 34**

**Project Name:**

Displaced Children's Project

**Location:**

**Organization:**

ACTION FOR LIFE  
(A.P.V.)

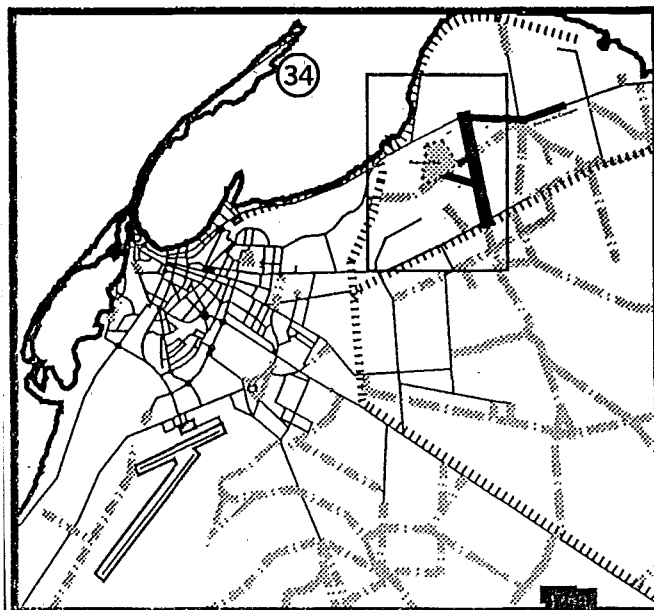
**Activity Sector:**

Children / Education

**Direct Participants:**

**Beneficiaries Affected:**

**Project Description:**



**Conclusion:**

**Contact:**

**PROJECT DATA SHEET No: 35**

**Project Name:**

AIDS Education

**Location:**

**Organization:**

Action for Life

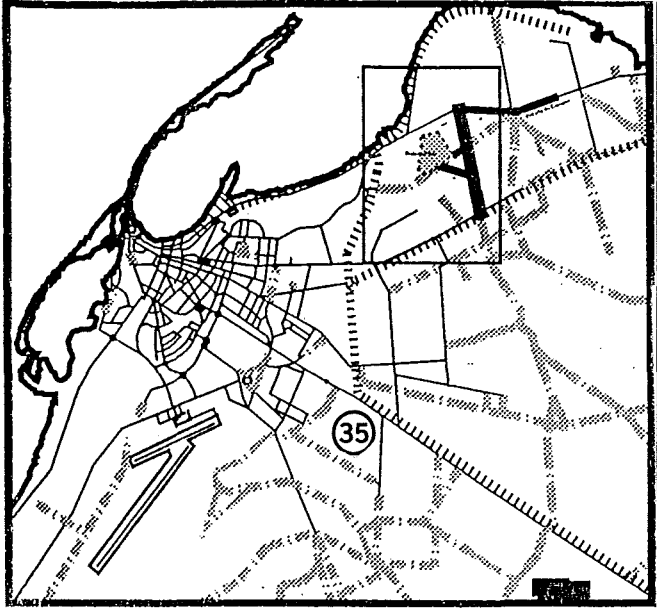
**Activity Sector:**

Health Education

**Direct Participants:**

**Beneficiaries Affected:**

**Project Description:**



**Conclusions:**

**Contact:**

**PROJECT DATA SHEET No: 36**

**Project Name:**

Mennonite School

**Location:**

Ngola Kiluange Bairro

**Organization:**

MENNONITE CHURCH OF ANGOLA  
(I.M.A.)

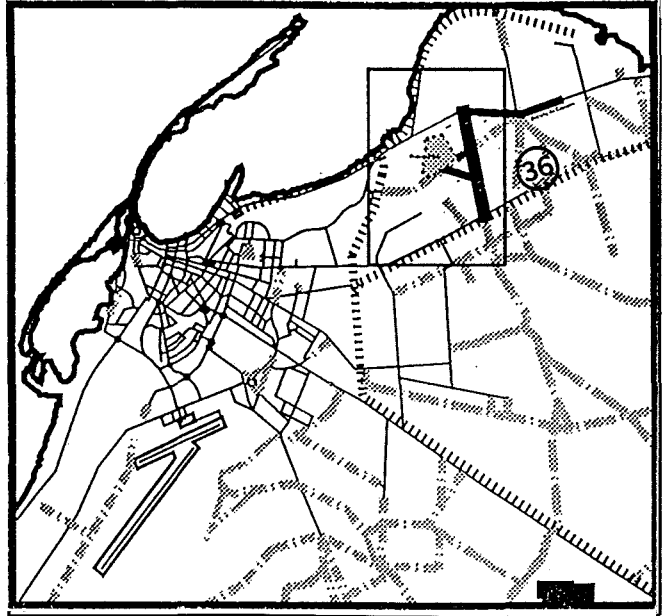
**Activity Sector:**

Education

**Direct Participants:**

**Beneficiaries Affected:**

**Project Description:**



**Conclusion:**

**Contact:**