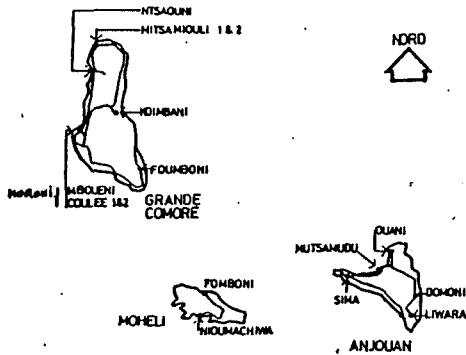


Development Workshop

project COMORES. Programme for the construction of 54 classrooms.

client UNESCO Consultancy

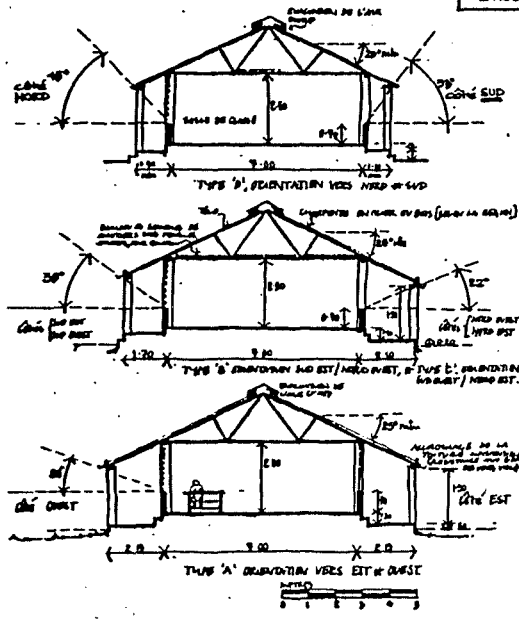
REPUBLIQUE FEDERALE ISLAMIQUE
DES COMORES



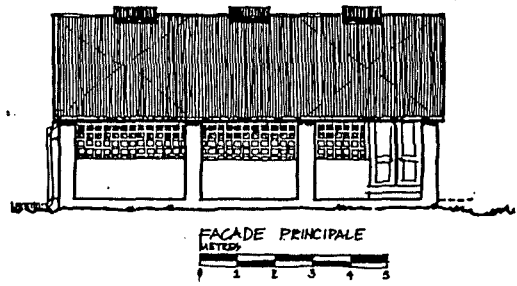
RESUME DES CARACTERISTIQUES DES SITES DES ECOLES PRIMAIRES

ANJOUAN

| Site | Nombre | Terrain | Orientat. | Type | Topographie | Sol | Ressources en Eau | Accès | Sanitaires | Emplacement pour cantine | Risque d'inondation | Electricité |
|------------------------------|--------|---------|-----------|------|-------------|----------------|--------------------|-----------|------------|--------------------------|---------------------|-------------|
| CHITROUNI | 1 | ✓ | ✓ | B | plat | terrain meuble | Energie à distance | route bit | à distance | X | non | X |
| BANDANI M. | 1 | ✓ | ✓ | B | penché | terrain meuble | à distance | route bit | à distance | ✓ | non | X |
| MISSIRI | 2 | ✓ | ✓ | B | plat | terrain meuble | Eau de ville | route bit | à distance | X | non | ✓ |
| OUANI | 2 | ✓ | ✓ | C | plat | terrain meuble | Eau de ville | route bit | à distance | ✓ | non | ✓ |
| BAHBAO MTROUNI | 2 | ✓ | ✓ | D | plat | terrain meuble | Source à 20m. | route bit | à distance | ✓ | non | X |
| BAZIMINI | 2 | ✓ | ✓ | D | penché | terrain meuble | Energie à distance | route bit | à distance | ✓ | non | X |
| KOKI 1 SITE PROPOSE ENCOMBRE | | | | | | | | | | | | |
| FOUKOUJOU DOMONI | 2 | ✓ | ✓ | A | plat | terrain meuble | Eau de ville | route bit | à distance | ✓ | non | ✓ |
| JANDZA | 2 | ✓ | ✓ | D | penché | terrain meuble | Energie à distance | route bit | à distance | X | non | X |
| SIMA | 2 | ✓ | ✓ | C | plat | terrain meuble | Eau de ville | route bit | à distance | ✓ | non | X |
| GANDZALE | 1 | ✓ | ✓ | D | penché | terrain meuble | Energie à distance | route bit | à distance | ✓ | non | X |
| MOYA | 1 | ✓ | ✓ | C | penché | terrain meuble | Energie à distance | route bit | à distance | ✓ | non | X |
| POMONI | 1 | ✓ | ✓ | C | plat | terrain meuble | Energie à distance | route bit | à distance | ✓ | non | ✓ |
| KONI DJODJO | 1 | ✓ | ✓ | C | penché | terrain meuble | Energie à distance | route bit | à distance | ✓ | non | X |
| LINGONI | 1 | ✓ | ✓ | C | penché | terrain meuble | Energie à distance | route bit | à distance | ✓ | non | X |



ECOLE PRIMAIRE I UNE SALLE DE CLASSE
PLAN PRELIMINAIRE.



In 1980 Development Workshop provided consultancy for a UNESCO programme for primary schools, aimed at building 54 new classrooms distributed amongst 36 villages on the three islands.

The project included detailed site selection and planning with an analysis of the environment of each site.

The classroom design was developed to respond to the varying climatic requirements and to make use of local resources for construction.

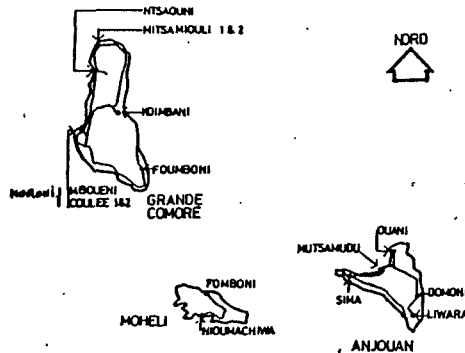
Total value of project US \$ 1.5 million
Funding by the African Development Bank.

Development Workshop

project COMORES. Programme for the construction of 54 classrooms.

client UNESCO Consultancy

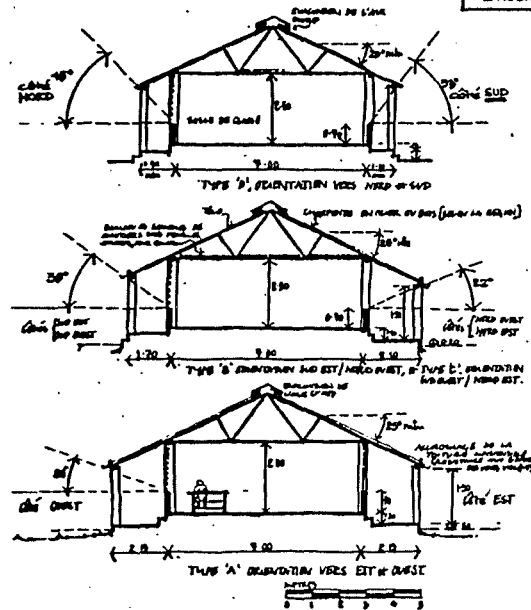
REPUBLIQUE FEDERALE ISLAMIQUE
DES COMORES



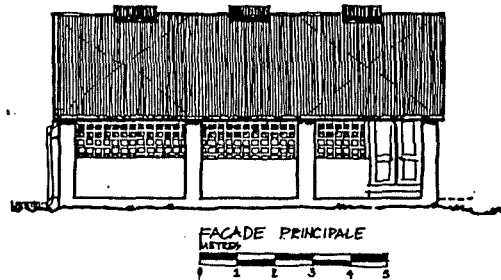
RESUME DES CARACTERISTIQUES DES SITES DES ECOLES PRIMAIRES

ANJOUAN

| Site | Nombre | Terrain | Orientat. | Type | Topographie | Sol | Ressources en Eau | Accès | Sanitaires | Emplacement pour cantine | Risque d'inondation | Electricité |
|------------------------------|--------|---------|-----------|------|-------------|----------------|--------------------|-----------|------------|--------------------------|---------------------|-------------|
| CHITROUNI | 1 | ✓ | ✓ | B | plat | terrain meuble | Energie à distance | route bit | à distance | X | non | X |
| BANDANI M. | 1 | ✓ | ✓ | B | penché | terrain meuble | à distance | route bit | à distance | ✓ | non | X |
| MISSIRI | 2 | ✓ | ✓ | B | plat | terrain meuble | Eau de ville | route bit | à distance | X | non | ✓ |
| OUANI | 2 | ✓ | ✓ | C | plat | terrain meuble | Eau de ville | route bit | à distance | ✓ | non | ✓ |
| BAHBAO MTROUNI | 2 | ✓ | ✓ | D | plat | terrain meuble | Source à 20m. | route bit | à distance | ✓ | non | X |
| BAZIMINI | 2 | ✓ | ✓ | D | penché | terrain meuble | Energie à distance | route bit | à distance | ✓ | non | X |
| KOKI 1 SITE PROPOSE ENCOMBRE | | | | | | | | | | | | |
| FOUKOUJOU DOMONI | 2 | ✓ | ✓ | A | plat | terrain meuble | Eau de ville | route bit | à distance | ✓ | non | ✓ |
| JANZA | 2 | ✓ | ✓ | D | penché | terrain meuble | Energie à distance | route bit | à distance | X | non | X |
| SIMA | 2 | ✓ | ✓ | C | plat | terrain meuble | Eau de ville | route bit | à distance | ✓ | non | X |
| GANDZALE | 1 | ✓ | ✓ | D | penché | terrain meuble | Energie à distance | route bit | à distance | ✓ | non | X |
| MOYA | 1 | ✓ | ✓ | C | penché | terrain meuble | Energie à distance | route bit | à distance | ✓ | non | X |
| POMONI | 1 | ✓ | ✓ | C | plat | terrain meuble | Energie à distance | route bit | à distance | ✓ | non | ✓ |
| KONI DJODJO | 1 | ✓ | ✓ | C | penché | terrain meuble | Energie à distance | route bit | à distance | ✓ | non | X |
| LINGONI | 1 | ✓ | ✓ | C | penché | terrain meuble | Energie à distance | route bit | à distance | ✓ | non | X |



ECOLE PRIMAIRE I UNE SALLE DE CLASSE
PLAN PRELIMINAIRE.



In 1980 Development Workshop provided consultancy for a UNESCO programme for primary schools, aimed at building 54 new classrooms distributed amongst 36 villages on the three islands.

The project included detailed site selection and planning with an analysis of the environment of each site.

The classroom design was developed to respond to the varying climatic requirements and to make use of local resources for construction.

Total value of project US \$ 1.5 million
Funding by the African Development Bank.