

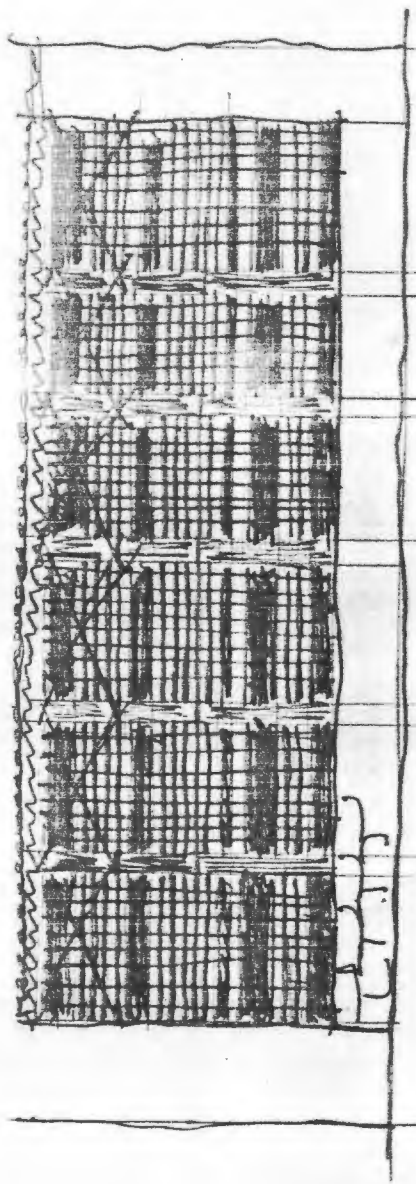
verticals between 7+9cm
centres

barasti window 30.9.73.
Mohamed Abdulla Saleem.
Willoya of Schar.

pattern of No 1 tighter than No 2 at bottom.

4 has top outside with lower reflectance than 5
which has jott khaki tarpaulin outside.

4.5.+6 seem wider spaced at bottom than 1+2+3.



Bayashi window
Muhammad Ashraf Salim.
2019. 73.
1:200.